

Average Daily Net Press Run For the Week Ended May 29, 1959 12,925

The Weather Forecast of U. S. Weather Bureau

About Town
Members of Mount Sabbath Lodge will meet tomorrow night at 7:30 at the Holmes Funeral home to say respects to Mrs. Sarah Howard, a member of the lodge.

FATHERS GO FOR OUR... FINE FOOD SUPER SAVINGS! SHOP HALE'S SELF SERVE and MEAT DEPT. DOUBLE 25% GREEN STAMPS TODAY!

SHOP HALE'S SELF SERVE and MEAT DEPT. DOUBLE 25% GREEN STAMPS TODAY! FATHERS KNOW BEST! You Can't Beat Hale's QUALITY MEATS!

DELECTABLE BURGERS LAMB LEGS 75¢ BONE-IN Chuck Roast 49¢ SMOKED PIGNICS 39¢ 2 LBS. DANISH CANNED HAM \$2.09 JELLIED TONGUE 49¢ HARD SALAMI 69¢ RENOA SALAMI 49¢ IOWA SWEET LOAF 69¢

DAD WILL SURE GO FOR THESE FOOD BUYS! FREE Crisco cookbook 85¢ THIS EMBLEM CAN MEAN A 1960 FORD GALAXIE FOR YOU

Knott's Velvets Process Cheese Spread, 2 lbs. 89¢ Hale's Freshly Ground COFFEE 67¢ lb. Local Fresh Grade A Large EGGS, 2 doz. 85¢

White Rose Bell-Tee For Delicacies ICED TEA 39¢ Pint Bottle Libby's "Heat and Serve" CORNED BEEF HASH 2-lb. cans 69¢

Gifts for Dad... CIGARETTES Regular brands... \$2.19 carton King also... \$2.19 carton

Love that Man! take pop out for dinner Poetic License Every art writer is entitled to some poetic license, but not quite as much as we took in our last ad when we wrote: 'What is so rare as a steak in June'

Beef Sirloin Steak The steak pictured above is a flat or double bone sirloin. We suggest a Pinehurst porterhouse or short steak if you want fewer servings. Every Pinehurst steak is aged at least ten days and they are all cut from choice grade government graded western beef.

Mr. Andrew Ferguson of 19 Brookfield St., was the first to point out that "what is so rare as a day in June" was written by James Russell Lowell; and just so you will know that Pinehurst has many poetry lovers among its customers, we hasten to add that by noon Friday at least 25 more people pointed out our error.

Our customers had a lot of fun over it... and, incidentally we sold so many steaks that we can stand the joshing over the error.

Farm fresh fryers and broilers will be offered in 2 and 3 1/2 lb. sizes... Large Selected Chicken Legs... 5 lbs. \$2.50

Bank will not be open Saturday a.m. We will gladly cash payroll and authorized personal checks.

Washing dishes is easy today... so's home heating our way! You get premium quality Mobilheat with RUC... the most completely refined fuel oil additive in use today.

THE Grand National FLOUR 5 Lb. Bag 49¢ WELCH'S GRAPEADE can 29¢ SHURFINE PEARS 2 1/2 can 42¢

Blow to Ike's Prestige Senate Rejects Strauss, 49-46 Washington, June 19 (AP)—In a dramatic 49-46 vote early today, the Senate rejected President Eisenhower's nomination of Lewis L. Strauss to be secretary of commerce.

Erhard Ready To Resign as Adenauer Aide Bonn, Germany, June 19 (AP)—Ludwig Erhard threatened today to resign as West Germany's economic minister.

Ike Says U.S. Loser In Strauss Rejection Washington, June 19 (AP)—President Eisenhower said today that the American people are the losers in what he called the sad episode of Senate rejection of Lewis L. Strauss as secretary of commerce.

Military Revolt Story Disputed By Argentina Buenos Aires, Argentina, June 19 (AP)—President Arturo Frondisi's government charged today that it is the target of a revolutionary plot.

Special Section On Hospital Wing In Herald Today Ten pages in today's edition of The Herald are devoted to the dedication of the new wing at Manchester Memorial Hospital.

Gov. Long Dragged To Mental Hospital Boston, June 19 (AP)—Gov. John F. Kennedy today said that Gov. Dwight D. Eisenhower had been dragged to a mental hospital.

Nike Accident Kills Soldier at Okinawa Base Naha, Okinawa, June 19 (AP)—One U.S. Army man was killed and five others injured today when a Nike type missile ignited prematurely at launching site near Naha airport.

Cost of Living At Record High Washington, June 19 (AP)—Living costs hit a new peak in May. Small rises in prices for practically all types of consumer goods during the month when all indexes rose one to two per cent.

Leeds Ask Berlin Deadline; Summit Talks Vital: Nikita Khrushchev Says Soviet For United Reich Pact Moscow, June 19 (AP)—Premier Nikita S. Khrushchev today asked a summit meeting to become the more necessary if the Geneva meeting of foreign ministers breaks down.

Ministers Stall Talk To July 13 Geneva, June 19 (AP)—The Big Four foreign ministers, locked in disagreement over a stopgap plan for Berlin, have agreed to recess until July 13, western sources said tonight.

Royal Couple Open Gander's New Terminal Queen Elizabeth II and Prince Philip opened today the new \$3 1/2 million airport terminal building at Gatwick.

Over 400 Receive Diplomas At Manchester High School Intermittent showers fell outside and inside the high school auditorium today during the graduation of over 400 seniors.

News Tidbits Mrs. Edith Birk, 50 of Bridgeport bound and gagged by two men in her home and left in the cellar when she was rescued.

Fear, Loneliness, Regret Life of Crime Pictured By Flying Bank Robber Akron, Ohio, June 19 (AP)—A man who has spent years in prison for robbing banks and stealing cars, is now a free man.

Ribicoff Orders 5% State Spending Cut Hartford, June 19 (AP)—Gov. Bruce Babbitt today ordered a 5 per cent. cut in state spending.

SLAYER WON'T BE TRIED Philadelphia, June 19 (AP)—Philadelphia district attorney today said that the man accused of slaying Dr. Martin Luther King Jr. will not be tried for murder.

Manchester Evening Herald

Published every evening except on Sundays and public holidays. Office: 301-315 Center St., Manchester, Conn. Telephone: 301-315.

Subscription rates: One Year \$10.00, Six Months \$6.00, Three Months \$3.50.

MEMBER OF THE ASSOCIATION OF PUBLISHERS OF NEWSPAPERS AND PERIODICALS OF THE UNITED STATES.

Copyright 1959 by The Manchester Evening Herald. All rights reserved.

Printed at the Manchester Evening Herald Press, 301-315 Center St., Manchester, Conn.

Friday, June 19, 1959

Facts Would 'Interfere'

Practically everybody agrees that it would be a just and non-inflationary solution of the steel wage question if the companies granted labor a wage increase which could be justified by the increase in productivity...

Manchester Evening Herald

Published every evening except on Sundays and public holidays. Office: 301-315 Center St., Manchester, Conn. Telephone: 301-315.

Subscription rates: One Year \$10.00, Six Months \$6.00, Three Months \$3.50.

MEMBER OF THE ASSOCIATION OF PUBLISHERS OF NEWSPAPERS AND PERIODICALS OF THE UNITED STATES.

Copyright 1959 by The Manchester Evening Herald. All rights reserved.

Printed at the Manchester Evening Herald Press, 301-315 Center St., Manchester, Conn.

Friday, June 19, 1959

Facts Would 'Interfere'

Practically everybody agrees that it would be a just and non-inflationary solution of the steel wage question if the companies granted labor a wage increase which could be justified by the increase in productivity...

Manchester Evening Herald

Published every evening except on Sundays and public holidays. Office: 301-315 Center St., Manchester, Conn. Telephone: 301-315.

Subscription rates: One Year \$10.00, Six Months \$6.00, Three Months \$3.50.

MEMBER OF THE ASSOCIATION OF PUBLISHERS OF NEWSPAPERS AND PERIODICALS OF THE UNITED STATES.

Copyright 1959 by The Manchester Evening Herald. All rights reserved.

Printed at the Manchester Evening Herald Press, 301-315 Center St., Manchester, Conn.

Friday, June 19, 1959

Facts Would 'Interfere'

Practically everybody agrees that it would be a just and non-inflationary solution of the steel wage question if the companies granted labor a wage increase which could be justified by the increase in productivity...

Here 'n There

by WALTER E. TEFORD COUNTY EDITOR

One man's belief that he and his associates will conquer space in a "flying saucer" remains unshaken despite the fact that his associates are under fire from Oklahoma and federal authorities...

A Thought for Today Sponsored by the Manchester Council of Churches Nancy Byrd Turner, who has written many poems for children, has given us this verse which that of Richard West Germany...

A Candidate At Last The Christian Democratic party at least was a candidate for the world's most famous high office, that of president of West Germany...

Extended Forecast The five-day forecast for Connecticut for the period Saturday through Wednesday calls for temperatures averaging about 75 degrees below normal...

Watkins-West Funeral Service ORMOND J. WEST, Director 141 EAST STREET, MITCHELL B-1195

Watkins-West Funeral Service ORMOND J. WEST, Director 141 EAST STREET, MITCHELL B-1195

Watkins-West Funeral Service ORMOND J. WEST, Director 141 EAST STREET, MITCHELL B-1195

Watkins-West Funeral Service ORMOND J. WEST, Director 141 EAST STREET, MITCHELL B-1195

Watkins-West Funeral Service ORMOND J. WEST, Director 141 EAST STREET, MITCHELL B-1195

Watkins-West Funeral Service ORMOND J. WEST, Director 141 EAST STREET, MITCHELL B-1195

Watkins-West Funeral Service ORMOND J. WEST, Director 141 EAST STREET, MITCHELL B-1195

Watkins-West Funeral Service ORMOND J. WEST, Director 141 EAST STREET, MITCHELL B-1195

Watkins-West Funeral Service ORMOND J. WEST, Director 141 EAST STREET, MITCHELL B-1195

Conventry Assessor Post Thrown Open; Broga 'Attitude' Criticized

The Coventry Board of Finance has decided to invite applications for the appropriate post of assessor now held by Raymond Broga...

League which is comprised of boys 18 years old and men up to 25 years of age...

Donations of amounts necessary to sponsor a full team for a season have been made by the restaurant...

Anyone available to give assistance in the way of assistance has been asked to contact Robert H. Wilcox...

Mr. and Mrs. William Francis Robarge of Middletown, Ct. will observe their 50th wedding anniversary at their home Sunday...

The Coventry American Legion Post and Auxiliary are making plans for a picnic August for veterans in Rocky Hill...

The local Auxiliary is eligible to send two delegates to the program. However, finances in the past have limited this representation to one...

The local Auxiliary is eligible to send two delegates to the program. However, finances in the past have limited this representation to one...

The local Auxiliary is eligible to send two delegates to the program. However, finances in the past have limited this representation to one...

The local Auxiliary is eligible to send two delegates to the program. However, finances in the past have limited this representation to one...

The local Auxiliary is eligible to send two delegates to the program. However, finances in the past have limited this representation to one...

The local Auxiliary is eligible to send two delegates to the program. However, finances in the past have limited this representation to one...

The local Auxiliary is eligible to send two delegates to the program. However, finances in the past have limited this representation to one...

The local Auxiliary is eligible to send two delegates to the program. However, finances in the past have limited this representation to one...

Life of Crime Pictured By Flying Bank Robber

On people in eight years and four months with state sentences running concurrently with federal sentences consecutive...

When Judge Fred R. Cramer sentenced Spreng on Butler County charges two weeks ago he said the state sentence could be served concurrently with federal sentence totaling 25 years maximum...

Burma, in southeast Asia, became an independent republic in 1948. It joined the United Nations the same year.

Anyone available to give assistance in the way of assistance has been asked to contact Robert H. Wilcox...

Mr. and Mrs. William Francis Robarge of Middletown, Ct. will observe their 50th wedding anniversary at their home Sunday...

The Coventry American Legion Post and Auxiliary are making plans for a picnic August for veterans in Rocky Hill...

The local Auxiliary is eligible to send two delegates to the program. However, finances in the past have limited this representation to one...

The local Auxiliary is eligible to send two delegates to the program. However, finances in the past have limited this representation to one...

The local Auxiliary is eligible to send two delegates to the program. However, finances in the past have limited this representation to one...

The local Auxiliary is eligible to send two delegates to the program. However, finances in the past have limited this representation to one...

The local Auxiliary is eligible to send two delegates to the program. However, finances in the past have limited this representation to one...

The local Auxiliary is eligible to send two delegates to the program. However, finances in the past have limited this representation to one...

The local Auxiliary is eligible to send two delegates to the program. However, finances in the past have limited this representation to one...

The local Auxiliary is eligible to send two delegates to the program. However, finances in the past have limited this representation to one...

South African Women Protest Brewing Curbs

Durban, South Africa, June 19 (AP)—African women in a mass demonstration for home brewing rights that has cost the lives of four Africans and put 24 in hospital...

Col. R. D. Jenkins, deputy police commissioner, announced police have summoned three heavily armed troop carriers from a depot in Cape Province, 500 miles away to help restore order...

When Judge Fred R. Cramer sentenced Spreng on Butler County charges two weeks ago he said the state sentence could be served concurrently with federal sentence totaling 25 years maximum...

Burma, in southeast Asia, became an independent republic in 1948. It joined the United Nations the same year.

Anyone available to give assistance in the way of assistance has been asked to contact Robert H. Wilcox...

Mr. and Mrs. William Francis Robarge of Middletown, Ct. will observe their 50th wedding anniversary at their home Sunday...

The Coventry American Legion Post and Auxiliary are making plans for a picnic August for veterans in Rocky Hill...

The local Auxiliary is eligible to send two delegates to the program. However, finances in the past have limited this representation to one...

The local Auxiliary is eligible to send two delegates to the program. However, finances in the past have limited this representation to one...

The local Auxiliary is eligible to send two delegates to the program. However, finances in the past have limited this representation to one...

The local Auxiliary is eligible to send two delegates to the program. However, finances in the past have limited this representation to one...

The local Auxiliary is eligible to send two delegates to the program. However, finances in the past have limited this representation to one...

The local Auxiliary is eligible to send two delegates to the program. However, finances in the past have limited this representation to one...

The local Auxiliary is eligible to send two delegates to the program. However, finances in the past have limited this representation to one...

LaPolla Chosen For Tufts Post

Laurence R. LaPolla, a senior at Tufts University, son of Mr. and Mrs. Laurence LaPolla, 25 Otis St., has been elected president of the Tufts University Intercollegiate Athletic Association...

When Judge Fred R. Cramer sentenced Spreng on Butler County charges two weeks ago he said the state sentence could be served concurrently with federal sentence totaling 25 years maximum...

Burma, in southeast Asia, became an independent republic in 1948. It joined the United Nations the same year.

Anyone available to give assistance in the way of assistance has been asked to contact Robert H. Wilcox...

Mr. and Mrs. William Francis Robarge of Middletown, Ct. will observe their 50th wedding anniversary at their home Sunday...

The Coventry American Legion Post and Auxiliary are making plans for a picnic August for veterans in Rocky Hill...

The local Auxiliary is eligible to send two delegates to the program. However, finances in the past have limited this representation to one...

The local Auxiliary is eligible to send two delegates to the program. However, finances in the past have limited this representation to one...

The local Auxiliary is eligible to send two delegates to the program. However, finances in the past have limited this representation to one...

The local Auxiliary is eligible to send two delegates to the program. However, finances in the past have limited this representation to one...

The local Auxiliary is eligible to send two delegates to the program. However, finances in the past have limited this representation to one...

The local Auxiliary is eligible to send two delegates to the program. However, finances in the past have limited this representation to one...

The local Auxiliary is eligible to send two delegates to the program. However, finances in the past have limited this representation to one...

The local Auxiliary is eligible to send two delegates to the program. However, finances in the past have limited this representation to one...

THOMPSON DAY CAMP FOR BOYS A FUN PACKED PROGRAM FOR THE WHOLE DAY! MONDAY THRU FRIDAY, 9 A.M. TO 4 P.M. Includes: Crafts, Hikes, Movies, Swimming, Exploring, Indian Lore, Cookouts, Rifle Range, Pony Rides, Dramatics.

THE MICHAELS WATCH UNCONDITIONALLY GUARANTEED FOR 3 YEARS! SO SUPERIOR A MECHANISM THAT WE WILL KEEP IT IN TOP RUNNING CONDITION FOR 3 LONG YEARS AT ABSOLUTELY NO EXPENSE TO YOU.

FOR YOUR MAN OF THE YEAR Father's Day SHOES AND SLIPPERS BATES SLIPPER-FREE FLOATER WHERE YOUR FOOT BENDS \$9.95

THE POMPEII for easy living... complete relaxing... \$9.95

C.E. HOUSE & SON WE GIVE 2% GREEN STAMPS

Life of Crime Pictured By Flying Bank Robber



You'll get the best deal right now during Buick Bargain Days

FINEST DEALS—Now is the time to see your Quality Buick Dealer. You'll find the best buys of the year during Buick Bargain Days...

FREE DELIVERIES! ALL YOUR OUTDOOR NEEDS UNDER ONE ROOF! Picnic Tables \$14.75, Patio Blocks \$29.00, FLAGSTONE \$24.00

CHARGE YOUR PRESCRIPTIONS HERE! PINE PHARMACY 664 CENTER ST. Read Herald Advs.

SENSATIONAL FATHERS' DAY SPECIALS! Wash 'n Wear 55% DACRON, 45% RAYON TROPICAL SLACKS \$4.88

SHORT SLEEVE SPORT SHIRTS YOU'VE SEEN THESE SAME SHIRTS AT DOLLARS MORE! \$1.88

Robert Hall AMERICA'S LARGEST FAMILY CLOTHING CHAIN SOUTH WINDSOR BERLIN

GRADUATION

Graduation Commemorates Four Years of Activities for 407 Class of 1959 Leaves MHS with Many Happy Memories

MHS Seniors Looking Forward To Prosperous, Active Future

Replying to a questionnaire prepared by the school, the seniors indicated that they are looking forward to a prosperous and active future. Many of the graduates are planning to attend college, while others are entering the workforce.

American Legion Awards

The American Legion has presented several awards to graduates of the class of 1959. These awards recognize their achievements in various fields, including sports and academics.

1959 Initiates Misses Noren Adams 'New Idea' at Class Night

The 1959 initiates, led by Noren Adams, presented a 'New Idea' at the class night. The idea was to have a more active and engaged class, focusing on community service and personal growth.

Seniors Dance to Romantic Theme--'Blue Mist' at Annual Reception

The annual reception for the class of 1959 was held at the school. The seniors danced to a romantic theme titled 'Blue Mist'. The event was a memorable occasion for the graduates.

Underwood Prizes

The Underwood Prizes were awarded to several graduates for their outstanding achievements. These prizes recognize excellence in various fields, including science, literature, and sports.

Fifty-Niners Boost Achievements in World of Manchester Sports

The fifty-niners have made significant contributions to Manchester sports. They have participated in various competitions and have achieved notable success, bringing honor to their school.

Reward Achievement in Final Assembly

The final assembly of the class of 1959 was held at the school. It was a time to reward the achievements of the graduates and to celebrate their accomplishments over the past four years.

Who's Who in 1959

A list of the 'Who's Who' in 1959, highlighting the achievements of the graduates. This list includes names of students who have excelled in their respective fields.

Space Theme of Somanhis

The theme of the Somanhis was 'Space'. This theme was explored through various projects and activities, reflecting the graduates' interests in science and technology.

State, National Prizes Won by Class of '59

The class of 1959 has won several state and national prizes. These prizes are a testament to the hard work and dedication of the graduates.

Dark Africa Scene of Will From Seniors

The seniors have presented a play titled 'Dark Africa'. This play explores the social and political issues of the continent, reflecting the graduates' awareness of global events.

Senior Picnic At Hilton's Said Success

The senior picnic at Hilton's was a great success. The event was well-attended and provided a fun and relaxing time for the graduates.

Senior Girls Get Sports Awards

The senior girls have received sports awards for their outstanding performance. These awards recognize their hard work and dedication to their respective sports.

Clark Medal

The Clark Medal was awarded to a graduate for their exceptional achievement. This medal is a highly respected honor, recognizing excellence in a specific field.

Former Student Wins Recognition

A former student has won recognition for their achievements. This recognition is a testament to their hard work and dedication during their time at school.

Clarke Medal

The Clarke Medal was awarded to a graduate for their exceptional achievement. This medal is a highly respected honor, recognizing excellence in a specific field.

Former Student Wins Recognition

A former student has won recognition for their achievements. This recognition is a testament to their hard work and dedication during their time at school.

Down Dance at 12:00

A down dance was held at 12:00. This event was a fun and social occasion for the graduates, providing a chance to relax and enjoy each other's company.

Senior Girls Get Sports Awards

The senior girls have received sports awards for their outstanding performance. These awards recognize their hard work and dedication to their respective sports.

Clark Medal

The Clark Medal was awarded to a graduate for their exceptional achievement. This medal is a highly respected honor, recognizing excellence in a specific field.

Former Student Wins Recognition

A former student has won recognition for their achievements. This recognition is a testament to their hard work and dedication during their time at school.

Clarke Medal

The Clarke Medal was awarded to a graduate for their exceptional achievement. This medal is a highly respected honor, recognizing excellence in a specific field.

Former Student Wins Recognition

A former student has won recognition for their achievements. This recognition is a testament to their hard work and dedication during their time at school.

Senior Girls Get Sports Awards

The senior girls have received sports awards for their outstanding performance. These awards recognize their hard work and dedication to their respective sports.

Clark Medal

The Clark Medal was awarded to a graduate for their exceptional achievement. This medal is a highly respected honor, recognizing excellence in a specific field.

Former Student Wins Recognition

A former student has won recognition for their achievements. This recognition is a testament to their hard work and dedication during their time at school.

Clarke Medal

The Clarke Medal was awarded to a graduate for their exceptional achievement. This medal is a highly respected honor, recognizing excellence in a specific field.

Former Student Wins Recognition

A former student has won recognition for their achievements. This recognition is a testament to their hard work and dedication during their time at school.

Clarke Medal

The Clarke Medal was awarded to a graduate for their exceptional achievement. This medal is a highly respected honor, recognizing excellence in a specific field.

Senior Girls Get Sports Awards

The senior girls have received sports awards for their outstanding performance. These awards recognize their hard work and dedication to their respective sports.

Clark Medal

The Clark Medal was awarded to a graduate for their exceptional achievement. This medal is a highly respected honor, recognizing excellence in a specific field.

Former Student Wins Recognition

A former student has won recognition for their achievements. This recognition is a testament to their hard work and dedication during their time at school.

Clarke Medal

The Clarke Medal was awarded to a graduate for their exceptional achievement. This medal is a highly respected honor, recognizing excellence in a specific field.

Former Student Wins Recognition

A former student has won recognition for their achievements. This recognition is a testament to their hard work and dedication during their time at school.

Clarke Medal

The Clarke Medal was awarded to a graduate for their exceptional achievement. This medal is a highly respected honor, recognizing excellence in a specific field.

Senior Girls Get Sports Awards

The senior girls have received sports awards for their outstanding performance. These awards recognize their hard work and dedication to their respective sports.

Clark Medal

The Clark Medal was awarded to a graduate for their exceptional achievement. This medal is a highly respected honor, recognizing excellence in a specific field.

Former Student Wins Recognition

A former student has won recognition for their achievements. This recognition is a testament to their hard work and dedication during their time at school.

Clarke Medal

The Clarke Medal was awarded to a graduate for their exceptional achievement. This medal is a highly respected honor, recognizing excellence in a specific field.

Former Student Wins Recognition

A former student has won recognition for their achievements. This recognition is a testament to their hard work and dedication during their time at school.

Clarke Medal

The Clarke Medal was awarded to a graduate for their exceptional achievement. This medal is a highly respected honor, recognizing excellence in a specific field.

Troops Give Curved Bars To 10 Girls

Parents and friends were the guests of two Girl Scout troops in ceremonies awarding Curved Bars last night.

Troop 54 held its court of awards at Camp Merrimack. Mrs. Grever Mitchell, troop leader, presented the Curved Bars plus to Cheryl Stantman and Barbara Pearce, who earned their awards in the home-making field and in Patricia Mitchell, who earned hers in the out-of-door field.

First class badges were presented to Susan Bland and Joan Anderson, majoring in the home-making field, and to Kathleen Ryan, majoring in the out-of-door field. Several proficiency badges were also presented to Cynthia Post and Paula Wupperfel.

After the conferment of awards which included a five certificate, aides of many troop activities were shown, and refreshments were served by the girls.

Their Curved Bars pins were presented to seven members of Troop 57 by the Rev. John F. Hamilton, pastor of St. John's Church. Rita Leah Lento, Mary Ann Simmons, Patricia O'Brien, Joan Schellenberg, Diederich Doherty and Caroline McCormack received their awards in citizenship, and Marion Gorman received hers in the home-making field.

Each girl read a scroll telling of her activities in scouting during the past seven years.

Patricia and Diederich, who are making opponents withdrew from the race.

He is a former Drake University football and track star.

Rockville-Vernon First Graduation Set Tonight At New High School Building

The first graduation exercises to be held in the new Rockville High School on Loveland Hill are scheduled for 8:15 p.m. today in the school gymnasium.

Some 207 senior students will receive their diplomas from Mrs. George Hammar, after being presented to her by Supt. of Schools Raymond E. Ramsdell. Mrs. Hammar, secretary of the Vermont Board of Education, will confer a diploma on her son, a member of the graduating class.

Added to the program this year will be musical selections by a high school chamber trio, formed by Samuel Goldfarb, music director. The trio is composed of Susan Burke, Mary Baker and Edward Gosnell.

The traditional graduation march will be played by the High School Band, also under the direction of Goldfarb. The graduating class will sing "Halls of Ivy," years in high school will address their fellow students. All girls there will be the only speakers at the exercises.

Irene Lee, an salutatorian, will greet the class while Leona Hasty, valedictorian, will give the parting address. Elizabeth Hyde, third in her class, and Helen Bloniarz, fourth, will also speak. An invocation and benediction will be offered by the Rev. Maurice G. Foulkner, pastor of St. John's Episcopal Church.

VERNON VOLUNTEER FIRE DEPARTMENT CARNIVAL
Tonight—7 p.m. to 11 p.m.
FUN FOR EVERYONE!
Special Rates for Children Saturday Afternoon 1 to 5
At Vernon Traffic Circle

Beth Sholom Set To Honor Cantor

This evening at the Sabbath eve service at 8:15, Temple Beth Sholom will honor Cantor George Wald on his completion of five years with the congregation.

A Sabbath Tea sponsored by the Temple Sisterhood and Brotherhood will follow the service. Cantor Wald came to Manchester in 1954. He is a graduate of the Sacred School of Music of the Hebrew Union College where he received the degree of Cantor and Education. In this capacity he has been in charge of the musical phase of the temple services and has taught in the Temple Religious School.

Cantor and Mrs. Wald have two children, Benjamin and Rochelle, who reside at 31 Arcadia Dr., Rio de Janeiro—Brazil was an independent monarchy from 1822 to 1889, when it became a republic.

Amesite Drives THE Thomas Colla Co.

WESTOWN PHARMACY
459 Hartford Road—(Corner of McKee)—Tel. MI 9-9946

OPEN ALL DAY SUNDAY
FATHER'S DAY, JUNE 21
Remember All Your Dads

On Father's Day
● YOUR OWN FATHER
● YOUR FATHER-IN-LAW
● YOUR GRANDFATHER
● YOUR GODFATHER
● YOUR FRIEND'S FATHER
AND DO NOT FORGET YOUR HUSBAND
REMEMBER THEM BEST

WITH → Cool Smoking Pipes Reg. \$5.00 Value—\$2.98 Gift Boxed

WITH → Lighters That Light ZIPPO \$3.95 up Zippo \$3.50 up WINDPROOF \$1.00

WITH → Tobacco, Popular Brands Buy The Found—Gift Boxed Fresh Cigars, 25's and 50's Buy The Box—Gift Boxed At Lowest Prices

WITH → Shaving Needs—Famous Brands Yardley, Old Spice, Sealorh Sportsman, Signature \$5.00 Amity Billfold—\$3.79

WITH → Hallmark Greeting Cards From Our Wide Selection

WESTOWN PHARMACY
459 Hartford Road—(Corner of McKee)—Tel. MI 9-9946

Ike Says U.S. Loser In Strauss Rejection

(Continued from Page One)

stepped from his car. He hurried past waiting newsmen, saying: "I'm late for the boat."

Strass did not go with the President to Eisenhower's office after the conference.

This was only the second time in his 8 1/2 years in office that Eisenhower has called newsmen into his office for such a session. The other occasion was in 1957 when he spoke critically regarding congressional action on a foreign aid bill.

Today, standing behind his big desk, the President read the statement:

"Last night the Senate refused to confirm the nomination as secretary of commerce of Lewis Strauss—a man who in war and in peace has served his nation loyally, bravely and effectively."

Members should bring assets on which to display their paintings. The exhibition will be open from 10 a.m. to 4 p.m. wherever it is held.

Safety Pants Glow

New York—A New York clothing manufacturer is marketing trousers that have built-in glow sticks to provide greater safety for men at night. The trousers' back-pocket flaps are lined with a reflective fabric that makes them visible in the dark of night.

As the glow sticks are attached to the back of the trousers, they can be read by the driver's headlights. The manufacturer said that he had tested the trousers on a highway and that they were quickly seen by motorists.

There still was no indication

Rockville-Vernon 105 Given Shots At School Clinic

The second phase of a polio clinic at Rockville High School continued successfully yesterday, with 105 students receiving immunizations, according to school nurse.

Mrs. Harry Backofen said this was the second shot for 100 of the students, and the first shot for five who had been absent on June 3, the day of the first clinic. Only two of those who received their first shot two weeks ago did not show up yesterday. Mrs. Backofen said that they may have decided to go to a private doctor for the second inoculation.

In the fall Mrs. Backofen will check up to see if those who declined in preference for their own doctors, actually received the inoculation. Dr. E. H. Metcalf conducted the clinic yesterday.

Two weeks ago 153 students appeared at the clinic out of 375 in the school. Mrs. Backofen said that she had not received all their shots for 35 of them it was the third and final shot.

Ill Health Keeps Man Out of Jail

A 68-year-old Coventry man escaped a jail sentence in Tolland County Superior Court today because of his health.

Benjamin Rantcheller, 68, was convicted by a jury last Friday of operating a motor vehicle while under the influence of intoxicants and reckless driving.

Since this was his second offense of driving under the influence the conviction carried a mandatory 60-day jail sentence.

However, a presentence investigation, ordered by Judge Thomas E. Tolland last week brought forth statements from two doctors to the effect that incarceration could have a serious effect on Rantcheller's health. One doctor said jail confinement might lead to complications that could result in death. Rantcheller was said to be jittery and emotionally unstable.

When Judge Tolland declared that he would suspend the sentence Rantcheller broke down and had to be helped from the courtroom.

high style

Edsel is designed to be the most distinctive car on the road. Note its fresh, crisp lines... its decorator-smart interiors... and you'll know why Edsel is singled out for high-style beauty.



low cost Edsel

It's easy to move up to Edsel, now priced down with many models of Plymouth, Chevrolet and Ford. Low initial cost saves you money when you buy. Two V-8 engines and an Economy Six that operate on regular gas save you money when you drive.

SEE YOUR LOCAL EDSSEL DEALER
Edsels are also at many Mercury dealers

WARDS

MONTGOMERY WARD

JUNE FAMILY SAVINGS SALE

SALE ENDS SATURDAY, JUNE 27

QUANTITIES ARE LIMITED ON SOME ITEMS ---- SHOP EARLY AND SAVE

824-928 MAIN ST. MANCHESTER

for 87 years, famous for first quality only.

Satisfaction Guaranteed

OR YOUR MONEY BACK

Large 12.8 cu. ft. TRU-COLD 2-door refrigerator-freezer

SALE! 299⁸⁸ WITH TRADE

SAVE \$100

- 101-lb. True-Zero freezer stays cold as chest-type freezers
- Sanitary defrost refrigerator never drains in food area
- Storage door has egg racks, butter and cheese keeper

Tru-Cold's are designed to hold more! Adjustable shelves, a rack for juice in the freezer, 1/2-gal. cartons in storage door; all give you extra space.

SALE! Big 12.7 cubic foot TRU-COLD refrigerator

Large 59-lb. capacity freezer chest. Full width crisper. Storage door with egg rack, butter-cheese keeper.

219⁸⁸ WITH TRADE

SALE! SIGNATURE 30" gas range with matchless oven

Oven, broiler, and burners light automatically. 23" clock-timer. Fluorescent light for cooktop visibility.

\$144 \$5 DOWN

SALE! SIGNATURE automatic all-fabric electric dryer

All-fabric "how-thru" drying prevents scorching. Choice of regular, slow, no-heat settings. Shut-off timer.

138⁸⁸ \$5 DOWN

SALE! SIGNATURE deluxe all-fabric automatic washer

Save \$23 a year on water and detergent. Thorough, gentle rotating agitator. 3 wash water temperatures.

188⁸⁸ \$5 DOWN

SALE! SIGNATURE 36" gas range with automatic lighting oven

No matches needed! Backboard has electric clock with timer. Microjet pilot use 1/3 less gas than old type.

\$144 \$5 DOWN

SALE! Deep-cleaning 1 hp SIGNATURE canister cleaner

No need to spend extra time cleaning—gets off the dirt first time. Disposable bags. 8 attachments. Lower in design, lightweight.

39⁸⁸ \$5 DOWN

SALE! Wards SIGNATURE portable sewing machine

Guaranteed for 20 years! Mend, dora without attachments. Automatic bobbin-winder, adjustable feed, full size head.

46⁸⁸ \$5 DOWN

SALE! 17 cu. ft. TRU-COLD Supreme chest freezer

Stores 59 1/2-lb. 5-year food protection policy. Fast freeze section. Food taddy, baskets.

269⁸⁸ \$10 DOWN

SALE! 17 in. Portable Airline

Lightweight—only 33 pounds. Removable safety glass. Mounted picture tube for sharp contrast. Free 90-day service.

169⁸⁸ \$5 DOWN

SALE! 1 N.P., 115v Tru-Cold 7100 BTU air conditioner

Portable, for comfort in any room. Operates on 115v current. Dual-Start Control maintains temperature set.

194⁸⁸ \$5 DOWN

SALE! TRU-COLD dehumidifier stops moisture damage!

Removes up to 22 pints of moisture every 24 hours. 3-yr. guarantee on sealed unit. Plug into any standard outlet.

86⁸⁸ \$5 DOWN

SALE! Ward exclusive New, richly carved broadloom

Mend of wool for resilience. rayon for color highlights, nylon for strength; a host to fine home furnishings. 18" deep, 9, 12, 15' widths.

78⁸⁸ Free Rug Pad Included

SALE! 20" steel base cabinet, white baked enamel finish

Water-resistant plastic top, gray mothy-of-pearl design. Large 18" deep utility drawer, door storage area. 16x36 in. High.

19⁸⁸ \$8.99

SALE! Space saving utility cabinet, a big 24x12x64"

Cleaning appliance with enamel finish so easy to clean! 6 full width shelf openings. Chrome pull, spring door catches. Flush door.

17⁸⁸ \$10.99

SALE! 15% OFF COMPLETE LINE WARDS BIRCH CUSTOM KITCHENS

Deluxe sandbox with a colorful adjustable canopy

Give the kids a backyard beach! Colorful hardwood with rust-resistant metal bottom.

729 15% off

JUNE FAMILY SAVINGS SALE

SALE ENDS SATURDAY, JUNE 27th

QUANTITIES ARE LIMITED ON SOME ITEMS ---- SHOP EARLY AND SAVE

SALE! 125 GARDEN CART

Sturdy steel construction. Holds up to 4 cu. ft.

6.88

SALE! 855 GARDEN BARROW

Extra-sturdy construction. Holds up to 4 cu. ft.

6.44

USUAL 29.95 window fan

Portable 2-speed 20" diameter. 3700 CFM. Chressed safety grille. No vibration.

19⁸⁸

SALE! 99.50 21" Rotary Mower

Fingerprint controls. Pull start. Compact at prices to 129.85. NOW

85⁵⁰

SALE! 129.50 Garden Mark 20" 2 H.P. deluxe reel mower

All controls are on the handle for easy operation. Has B&B 4-cycle engine, rugged 10" tires, 10" cut mower. Height adjustable to 2-inch.

109⁸⁸

SALE! Garden Mark 5 1/2 hp PLOW TRAC garden tractor

A terrific buy! You get 4 shifts forward and reverse—plenty of power. Taps in any lawn or garden job. Easy to use!

289⁰⁰

AVAILABLE IN A BEAUTIFUL ARRAY OF COLORS

Wards 24-in. rotary mower IS YOUR BEST BUY

59⁸⁸ Reg. 79.95

Big savings at Wards low price. Staggered wheels for a velvety smooth cut. A week and time saved—you can't afford to miss.

VISIT WARDS GARDEN SHOP TODAY

SALE! 15.95 2-track tilt combination aluminum window

Aluminum frame won't rust or warp. Inserts tilt for easy cleaning. Up to 74 combined lights.

***12⁸⁸**

SALE! 39.95 Wards 1-inch pre-hung aluminum door

Who's out or warp. 2.50 frame adjusts to 8 1/2" square openings. Full length piano hinge with lifetime nylon bearings.

34⁸⁸

SALE! 24" brazier with hood, motor, yellow bowl

A beauty to see and use—popped not to burn out to 22 mph. Full gear shift action, easy to operate. Quick starting. Speeds up to 12 mph. Slip clutch propeller.

14⁸⁸

SALE! Reg. 210.00 compact Sea King 5 h.p. twin motor

First choice of fishermen and boating families. Economical, easy to operate. Quick starting. Speeds up to 12 mph. Slip clutch propeller.

188⁰⁰

SALE! 5.69 Certified Super House Paint

4.44 per gal. to 4 gal. min. sale.

- Lined all base
- Higher coverage, lower cost
- Field tested for 15 years
- Compare with 7.35 brands

Certified Super House is highly durable and weather-resistant. Super is self-cleaning, retains its color and wears evenly. It's easy to apply.

SALE! 1 N.P., 115v Tru-Cold 7100 BTU air conditioner

Portable, for comfort in any room. Operates on 115v current. Dual-Start Control maintains temperature set.

194⁸⁸ \$5 DOWN

SALE! TRU-COLD dehumidifier stops moisture damage!

Removes up to 22 pints of moisture every 24 hours. 3-yr. guarantee on sealed unit. Plug into any standard outlet.

86⁸⁸ \$5 DOWN

SALE! Big 17" portable TV with fringe-area performance

Lightweight—only 33 pounds. Removable safety glass. Mounted picture tube for sharp contrast. Free 90-day service.

169⁸⁸ \$5 DOWN

SALE! Ward exclusive New, richly carved broadloom

Mend of wool for resilience. rayon for color highlights, nylon for strength; a host to fine home furnishings. 18" deep, 9, 12, 15' widths.

78⁸⁸ Free Rug Pad Included

SALE! 20" steel base cabinet, white baked enamel finish

Water-resistant plastic top, gray mothy-of-pearl design. Large 18" deep utility drawer, door storage area. 16x36 in. High.

19⁸⁸ \$8.99

SALE! Space saving utility cabinet, a big 24x12x64"

Cleaning appliance with enamel finish so easy to clean! 6 full width shelf openings. Chrome pull, spring door catches. Flush door.

17⁸⁸ \$10.99

SALE! 15% OFF COMPLETE LINE WARDS BIRCH CUSTOM KITCHENS

Deluxe sandbox with a colorful adjustable canopy

Give the kids a backyard beach! Colorful hardwood with rust-resistant metal bottom.

729 15% off

JUN 19

Gov. Long Dragged To Mental Hospital

(Continued from Page One) An attempt to take the governor to the mental hospital was made today to oppose the governor's decision to take the governor to the mental hospital...

Nike Accident Kills Soldier at Okinawa Base

(Continued from Page One) A Nike missile accident at Okinawa base today killed a soldier and injured three other persons...

Church Planning Outdoor Service

For the 8th year in a row the church will hold an outdoor service at the Calvary Hospital...

Cancer Group Honors Sleith

The Connecticut Division of the American Cancer Society will honor H. Manchester Sleith...

Kitchen Linoleum Worn Out?

Why not let us give you an estimate on new linoleum with sanitary cover base to beautify your kitchen...

Personalized Floors

Formite tops replacements complete with sinks and all plumbing. Ceramic tile baths.

Grash Victim Critical

New Haven, June 19 (AP)—Wayne Grash, 19, of North Branford, was on the danger list today at St. Raphael's Hospital...

Jaycees to Hold Banquet Monday

The Junior Chamber of Commerce installation and awards banquet will be held Monday at the Red Embury Restaurant...

State Police Seize Car

State Police seized a car today which was reported to have been used in a robbery in New Haven...

Police Arrests

Police arrested Reginald E. Pamphrey, 33, of 489 E. Middle Street, early this morning...

3 New Members Join Emblem Club

Three new members were initiated into the Manchester Emblem Club at the meeting Wednesday night...

Parking Limited During Dedication

Police will restrict parking on Russell, Albany and Alpine Sts. tomorrow to facilitate the flow of traffic during the public dedication...

Largest Building Rising

Stockholm—Europe's largest office building is expected to be ready for occupancy in 1962 at Rackets, near Stockholm...

Local Stocks

Table listing local stocks including Cobscook Bank, Hartford National, and various insurance companies.

Rok Killed in Battle

ROK KILLED IN BATTLE. Seoul, June 19 (AP)—One South Korean soldier was killed and others wounded yesterday in a gun battle with the Communists...

State Spending Cut

(Continued from Page One) A study of these contingencies reveals and has an impact on the overall financial condition of the state...

Public Utilities

Public Utilities. Code Light & Power 22 34, Hartford Electric 18 20, Hartford Gas 48 49...

Food King Weekend Specials

Table listing Food King weekend specials: Bread 12c, Steaks 79c, Hamburg 39c, Eggs 89c, Miracle Whip 33c, Whole Strawberries 39c.

Product of the Month

Screen-time! "Time to get DURALL!" ALUMINUM TENSION SCREEN. A NEW KIND OF SCREEN AT A NEW LOW COST.

W.G. Glenney Building Materials

W.G. GLENNEY BUILDING MATERIALS LUMBER FUEL. 336 NORTH MAIN STREET. PHONE MI 9-2523.

ESTHER WILLIAMS PENTHOUSE POOLS

ESTHER WILLIAMS PENTHOUSE POOLS. OPEN FOR INSPECTION SUNDAY 2 TILL 6. R. F. DIMOCK CO.—MI 9-5245.

Idle Claims Down In State, Town

Claims for unemployment compensation in the State declined from 35,411 to 33,866—a drop of 1,545—during the last week...

Police Arrests

Police arrested Reginald E. Pamphrey, 33, of 489 E. Middle Street, early this morning...

3 New Members Join Emblem Club

Three new members were initiated into the Manchester Emblem Club at the meeting Wednesday night...

Parking Limited During Dedication

Police will restrict parking on Russell, Albany and Alpine Sts. tomorrow to facilitate the flow of traffic during the public dedication...

WOODLAND GARDENS

WOODLAND GARDENS. COMPLETE and EXCELLENT SELECTION OF TRANSPLANTED ANNUAL FLOWERING PLANTS.

WOODLAND GARDENS

WOODLAND GARDENS. COMPLETE and EXCELLENT SELECTION OF TRANSPLANTED ANNUAL FLOWERING PLANTS.

WOODLAND GARDENS

WOODLAND GARDENS. COMPLETE and EXCELLENT SELECTION OF TRANSPLANTED ANNUAL FLOWERING PLANTS.

WOODLAND GARDENS

WOODLAND GARDENS. COMPLETE and EXCELLENT SELECTION OF TRANSPLANTED ANNUAL FLOWERING PLANTS.

WOODLAND GARDENS

WOODLAND GARDENS. COMPLETE and EXCELLENT SELECTION OF TRANSPLANTED ANNUAL FLOWERING PLANTS.

WOODLAND GARDENS

WOODLAND GARDENS. COMPLETE and EXCELLENT SELECTION OF TRANSPLANTED ANNUAL FLOWERING PLANTS.

WOODLAND GARDENS

WOODLAND GARDENS. COMPLETE and EXCELLENT SELECTION OF TRANSPLANTED ANNUAL FLOWERING PLANTS.

WOODLAND GARDENS

WOODLAND GARDENS. COMPLETE and EXCELLENT SELECTION OF TRANSPLANTED ANNUAL FLOWERING PLANTS.

WOODLAND GARDENS

WOODLAND GARDENS. COMPLETE and EXCELLENT SELECTION OF TRANSPLANTED ANNUAL FLOWERING PLANTS.

WOODLAND GARDENS

WOODLAND GARDENS. COMPLETE and EXCELLENT SELECTION OF TRANSPLANTED ANNUAL FLOWERING PLANTS.

WOODLAND GARDENS

WOODLAND GARDENS. COMPLETE and EXCELLENT SELECTION OF TRANSPLANTED ANNUAL FLOWERING PLANTS.

WOODLAND GARDENS

WOODLAND GARDENS. COMPLETE and EXCELLENT SELECTION OF TRANSPLANTED ANNUAL FLOWERING PLANTS.

WOODLAND GARDENS

WOODLAND GARDENS. COMPLETE and EXCELLENT SELECTION OF TRANSPLANTED ANNUAL FLOWERING PLANTS.

WOODLAND GARDENS

WOODLAND GARDENS. COMPLETE and EXCELLENT SELECTION OF TRANSPLANTED ANNUAL FLOWERING PLANTS.

WOODLAND GARDENS

WOODLAND GARDENS. COMPLETE and EXCELLENT SELECTION OF TRANSPLANTED ANNUAL FLOWERING PLANTS.

WOODLAND GARDENS

WOODLAND GARDENS. COMPLETE and EXCELLENT SELECTION OF TRANSPLANTED ANNUAL FLOWERING PLANTS.

WOODLAND GARDENS

WOODLAND GARDENS. COMPLETE and EXCELLENT SELECTION OF TRANSPLANTED ANNUAL FLOWERING PLANTS.

WOODLAND GARDENS

WOODLAND GARDENS. COMPLETE and EXCELLENT SELECTION OF TRANSPLANTED ANNUAL FLOWERING PLANTS.

WOODLAND GARDENS

WOODLAND GARDENS. COMPLETE and EXCELLENT SELECTION OF TRANSPLANTED ANNUAL FLOWERING PLANTS.

WOODLAND GARDENS

WOODLAND GARDENS. COMPLETE and EXCELLENT SELECTION OF TRANSPLANTED ANNUAL FLOWERING PLANTS.

Golnik-Simpson Wedding

The wedding of Miss Elizabeth Anne Simpson, daughter of the Rev. and Mrs. Clifford O. Simpson, and Herman Karl Golnik...

Girl, 12, Bruised Running into Car

Twelve-year-old Andrea Peltier, 124 Main St., was taken to Manchester Memorial Hospital yesterday at 4 p.m. after she ran into the side of a moving car while crossing the street to her home...

Testimonial for Rabbi Sponsored by Priest

Lawrence, Mass., June 19 (AP)—A testimonial for the Rev. W. J. McCormack, pastor of the Holy Trinity Church, was sponsored by a priest...

ESTHER WILLIAMS PENTHOUSE POOLS

ESTHER WILLIAMS PENTHOUSE POOLS. OPEN FOR INSPECTION SUNDAY 2 TILL 6. R. F. DIMOCK CO.—MI 9-5245.

Kitchen Linoleum Worn Out?

Why not let us give you an estimate on new linoleum with sanitary cover base to beautify your kitchen and simplify maintenance...

Idle Claims Down In State, Town

Claims for unemployment compensation in the State declined from 35,411 to 33,866—a drop of 1,545—during the last week...

Police Arrests

Police arrested Reginald E. Pamphrey, 33, of 489 E. Middle Street, early this morning...

3 New Members Join Emblem Club

Three new members were initiated into the Manchester Emblem Club at the meeting Wednesday night...

Parking Limited During Dedication

Police will restrict parking on Russell, Albany and Alpine Sts. tomorrow to facilitate the flow of traffic during the public dedication...

Largest Building Rising

Stockholm—Europe's largest office building is expected to be ready for occupancy in 1962 at Rackets, near Stockholm...

WOODLAND GARDENS

WOODLAND GARDENS. COMPLETE and EXCELLENT SELECTION OF TRANSPLANTED ANNUAL FLOWERING PLANTS.

WOODLAND GARDENS

WOODLAND GARDENS. COMPLETE and EXCELLENT SELECTION OF TRANSPLANTED ANNUAL FLOWERING PLANTS.

WOODLAND GARDENS

WOODLAND GARDENS. COMPLETE and EXCELLENT SELECTION OF TRANSPLANTED ANNUAL FLOWERING PLANTS.

WOODLAND GARDENS

WOODLAND GARDENS. COMPLETE and EXCELLENT SELECTION OF TRANSPLANTED ANNUAL FLOWERING PLANTS.

WOODLAND GARDENS

WOODLAND GARDENS. COMPLETE and EXCELLENT SELECTION OF TRANSPLANTED ANNUAL FLOWERING PLANTS.

WOODLAND GARDENS

WOODLAND GARDENS. COMPLETE and EXCELLENT SELECTION OF TRANSPLANTED ANNUAL FLOWERING PLANTS.

WOODLAND GARDENS

WOODLAND GARDENS. COMPLETE and EXCELLENT SELECTION OF TRANSPLANTED ANNUAL FLOWERING PLANTS.

WOODLAND GARDENS

WOODLAND GARDENS. COMPLETE and EXCELLENT SELECTION OF TRANSPLANTED ANNUAL FLOWERING PLANTS.

WOODLAND GARDENS

WOODLAND GARDENS. COMPLETE and EXCELLENT SELECTION OF TRANSPLANTED ANNUAL FLOWERING PLANTS.

WOODLAND GARDENS

WOODLAND GARDENS. COMPLETE and EXCELLENT SELECTION OF TRANSPLANTED ANNUAL FLOWERING PLANTS.

WOODLAND GARDENS

WOODLAND GARDENS. COMPLETE and EXCELLENT SELECTION OF TRANSPLANTED ANNUAL FLOWERING PLANTS.

WOODLAND GARDENS

WOODLAND GARDENS. COMPLETE and EXCELLENT SELECTION OF TRANSPLANTED ANNUAL FLOWERING PLANTS.

WOODLAND GARDENS

WOODLAND GARDENS. COMPLETE and EXCELLENT SELECTION OF TRANSPLANTED ANNUAL FLOWERING PLANTS.

WOODLAND GARDENS

WOODLAND GARDENS. COMPLETE and EXCELLENT SELECTION OF TRANSPLANTED ANNUAL FLOWERING PLANTS.

WOODLAND GARDENS

WOODLAND GARDENS. COMPLETE and EXCELLENT SELECTION OF TRANSPLANTED ANNUAL FLOWERING PLANTS.

WOODLAND GARDENS

WOODLAND GARDENS. COMPLETE and EXCELLENT SELECTION OF TRANSPLANTED ANNUAL FLOWERING PLANTS.

WOODLAND GARDENS

WOODLAND GARDENS. COMPLETE and EXCELLENT SELECTION OF TRANSPLANTED ANNUAL FLOWERING PLANTS.

WOODLAND GARDENS

WOODLAND GARDENS. COMPLETE and EXCELLENT SELECTION OF TRANSPLANTED ANNUAL FLOWERING PLANTS.

WOODLAND GARDENS

WOODLAND GARDENS. COMPLETE and EXCELLENT SELECTION OF TRANSPLANTED ANNUAL FLOWERING PLANTS.

WOODLAND GARDENS

WOODLAND GARDENS. COMPLETE and EXCELLENT SELECTION OF TRANSPLANTED ANNUAL FLOWERING PLANTS.

WOODLAND GARDENS

WOODLAND GARDENS. COMPLETE and EXCELLENT SELECTION OF TRANSPLANTED ANNUAL FLOWERING PLANTS.

WOODLAND GARDENS

WOODLAND GARDENS. COMPLETE and EXCELLENT SELECTION OF TRANSPLANTED ANNUAL FLOWERING PLANTS.

WOODLAND GARDENS

WOODLAND GARDENS. COMPLETE and EXCELLENT SELECTION OF TRANSPLANTED ANNUAL FLOWERING PLANTS.

WOODLAND GARDENS

WOODLAND GARDENS. COMPLETE and EXCELLENT SELECTION OF TRANSPLANTED ANNUAL FLOWERING PLANTS.

WOODLAND GARDENS

WOODLAND GARDENS. COMPLETE and EXCELLENT SELECTION OF TRANSPLANTED ANNUAL FLOWERING PLANTS.

WOODLAND GARDENS

WOODLAND GARDENS. COMPLETE and EXCELLENT SELECTION OF TRANSPLANTED ANNUAL FLOWERING PLANTS.

WOODLAND GARDENS

WOODLAND GARDENS. COMPLETE and EXCELLENT SELECTION OF TRANSPLANTED ANNUAL FLOWERING PLANTS.

WOODLAND GARDENS

WOODLAND GARDENS. COMPLETE and EXCELLENT SELECTION OF TRANSPLANTED ANNUAL FLOWERING PLANTS.

WOODLAND GARDENS

WOODLAND GARDENS. COMPLETE and EXCELLENT SELECTION OF TRANSPLANTED ANNUAL FLOWERING PLANTS.

WOODLAND GARDENS

WOODLAND GARDENS. COMPLETE and EXCELLENT SELECTION OF TRANSPLANTED ANNUAL FLOWERING PLANTS.

WOODLAND GARDENS

WOODLAND GARDENS. COMPLETE and EXCELLENT SELECTION OF TRANSPLANTED ANNUAL FLOWERING PLANTS.

WOODLAND GARDENS

WOODLAND GARDENS. COMPLETE and EXCELLENT SELECTION OF TRANSPLANTED ANNUAL FLOWERING PLANTS.

WOODLAND GARDENS

WOODLAND GARDENS. COMPLETE and EXCELLENT SELECTION OF TRANSPLANTED ANNUAL FLOWERING PLANTS.

WOODLAND GARDENS

WOODLAND GARDENS. COMPLETE and EXCELLENT SELECTION OF TRANSPLANTED ANNUAL FLOWERING PLANTS.

WOODLAND GARDENS

WOODLAND GARDENS. COMPLETE and EXCELLENT SELECTION OF TRANSPLANTED ANNUAL FLOWERING PLANTS.

WOODLAND GARDENS

WOODLAND GARDENS. COMPLETE and EXCELLENT SELECTION OF TRANSPLANTED ANNUAL FLOWERING PLANTS.

WOODLAND GARDENS

WOODLAND GARDENS. COMPLETE and EXCELLENT SELECTION OF TRANSPLANTED ANNUAL FLOWERING PLANTS.

WOODLAND GARDENS

WOODLAND GARDENS. COMPLETE and EXCELLENT SELECTION OF TRANSPLANTED ANNUAL FLOWERING PLANTS.

Columbia Miss Elliott Wins LaCrosse Award

The first of the John LaCrosse awards established by the LaCrosse... Miss Elliott, a senior at the... won the award for her... leadership and... activities...

Don I. Hattin

Nancy T. Walsh

Moriconi Nabbed On Evasion Count

William O. Moriconi, 24, of 23 Gerard St., who allegedly left the scene of an auto accident in East Hartford, was arrested in Manchester at 1:20 this morning after police had been alerted to watch for his car.

Volunteers Stated To Staff Museum

Miss Barbara Neill, the director of the Luis J. Zuki Museum, will be on vacation next week. During her absence, the museum will be open and staffed by one teacher and one parent, as volunteers, each day.

Joyce C. Wetberill Patricia Wupperfeld New Britain Teachers Graduates

Four Manchester residents received bachelor of science degrees in commencement exercises at the University of Connecticut in New Britain Sunday. Joyce C. Wetberill, daughter of Mrs. Hattin, and Patricia A. Wupperfeld, daughter of Mr. and Mrs. Wupperfeld, 50 Grandville St., were among the graduates.

Horse Meat Preferred

The Havre-Meat consumption in France now averages more than 2,500,000 tons a year, according to a report by the French government. The report states that horse meat is preferred over beef and many French people prefer horse-meat steaks to beefsteaks.

Barbecue, Food Sales

The Women's Guild of the Columbia Congregational Church, at its meeting Tuesday night, announced plans for a series of food sales to be held during the summer months. The proceeds will go to the church fund.

Trade Meet Zamboni

Columbia Recreation Council members attending a track and field jamboree to be held on Hutchinson Field July 4 for all the young people of the town.

Wheeler-Hay Engagement

Of interest here is the announcement of the engagement of Miss Helen Elizabeth Hay of Goshen, N.H., to Robert Craig Wheeler, son of Mr. and Mrs. Russell H. Wheeler, Sr., of Manchester, N.H.

Miss Hay, who is a member of the faculty of Southwest High School in Miami, Fla., is attending the University of Kansas and is a member of Phi Kappa Phi and Kappa Kappa Gamma societies.

Children from first grade through high school will be participating in the annual 'Junior Deb' contest.

Woodcock Refrigeration Company

MANCHESTER—MI 4-1111

Take Your Pick: Perfume To Smell, Smoke or Drink

In glass cases along the walls are bottles of perfume ingredients. Some of them are orange blossoms and others of roses from the Nile Delta. Amber is brought from whales in the Red Sea and Indian Ocean. Musk is extracted from trees near Isfahan and from China. Musk is extracted from both which form on oxen in Central Asia.

John F. Tierney Funeral Home

A prompt, courteous, sympathetic service with personal attention for the many details. Convenient parking on premises. Located in a quiet, residential neighborhood.

Rockville 4-Year Battle Over Acreage Still Unsettled

Settlement of a 4-year old dispute over ownership of a piece of land in the town of Rockville was postponed by the court in a decision handed down in the Superior Court.

Road-Death Claims Up

New York—Motor-vehicle fatalities in the United States during 1958 resulted in 47,000 life-insurance death claims for a record total of \$1,000,000, according to the Institute of Life Insurance.

Manhattan, Madagascar—Madagascar, the world's fourth-largest island, is the world's largest island in the world's largest island.

20% off ALL SWIM TRUNKS FAMOUS MAKES GLENNEY'S MEN'S SHOP 789 MAIN ST.

AGAIN INVITING All Boys and Girls TO VACATION SCHOOL

Including Outdoor Morning Devotions Enjoyable and Meaningful Handicraft Songs, Pictures, Recreation Above all, Bible-based, Christ-centered, Life-related Christian Training

JOHN F. TIERNEY Funeral Home A prompt, courteous, sympathetic service with personal attention for the many details.

Rockville 4-Year Battle Over Acreage Still Unsettled Settlement of a 4-year old dispute over ownership of a piece of land in the town of Rockville was postponed by the court.

IMPORTANT NEW LOAN BENEFITS FOR MANCHESTER CUSTOMERS Hartford National offers low-cost instalment loans for any worthwhile purpose - PLUS these important new features...

THE NEW CHECK-CREDIT PLAN ... borrow money whenever you need it, just by writing a check.

THE NEW 8-YEAR EDUCATION PAYMENT PLAN ... to help parents meet the rising costs of education.

5-YEAR HOME IMPROVEMENT LOANS ... to help you expand, remodel, repair.

LOW-COST MARINE LOANS ... to help you buy, equip and maintain your boat.

AND free Life and Permanent Total Disability Insurance Protection on all Hartford National Time Payment Loans.

Over 400 Receive Diplomas At Manchester High School

Manchester High School graduates received their diplomas in a ceremony held in the school auditorium. Over 400 students were present.

Graduates Patiently Await Sheepskins

Special This Week! BUY 10 WINDOWS GET A FREE DOOR!

WEATHERGUARD 443 MAIN ST., MANCHESTER

FAIRWAY OPEN till 9 p.m. TONITE

SPECIALS FOR TONITE and SAT. ONLY

SEE PHILLIPS NOW! Connecticut's Largest Garage Display!

PHILLIPS GARAGES

PHILLIPS GARAGES

Manchesters High Graduates

Manchesters High School graduates received their diplomas in a ceremony held in the school auditorium. Over 400 students were present.

Graduates Patiently Await Sheepskins

Special This Week! BUY 10 WINDOWS GET A FREE DOOR!

WEATHERGUARD 443 MAIN ST., MANCHESTER

FAIRWAY OPEN till 9 p.m. TONITE

SPECIALS FOR TONITE and SAT. ONLY

SEE PHILLIPS NOW! Connecticut's Largest Garage Display!

PHILLIPS GARAGES

PHILLIPS GARAGES

Manchesters High Graduates

Manchesters High School graduates received their diplomas in a ceremony held in the school auditorium. Over 400 students were present.

Graduates Patiently Await Sheepskins

Special This Week! BUY 10 WINDOWS GET A FREE DOOR!

WEATHERGUARD 443 MAIN ST., MANCHESTER

FAIRWAY OPEN till 9 p.m. TONITE

SPECIALS FOR TONITE and SAT. ONLY

SEE PHILLIPS NOW! Connecticut's Largest Garage Display!

PHILLIPS GARAGES

PHILLIPS GARAGES

Manchesters High Graduates

Manchesters High School graduates received their diplomas in a ceremony held in the school auditorium. Over 400 students were present.

Graduates Patiently Await Sheepskins

Special This Week! BUY 10 WINDOWS GET A FREE DOOR!

WEATHERGUARD 443 MAIN ST., MANCHESTER

FAIRWAY OPEN till 9 p.m. TONITE

SPECIALS FOR TONITE and SAT. ONLY

SEE PHILLIPS NOW! Connecticut's Largest Garage Display!

PHILLIPS GARAGES

PHILLIPS GARAGES

Manchesters High Graduates

Manchesters High School graduates received their diplomas in a ceremony held in the school auditorium. Over 400 students were present.

Graduates Patiently Await Sheepskins

Special This Week! BUY 10 WINDOWS GET A FREE DOOR!

WEATHERGUARD 443 MAIN ST., MANCHESTER

FAIRWAY OPEN till 9 p.m. TONITE

SPECIALS FOR TONITE and SAT. ONLY

SEE PHILLIPS NOW! Connecticut's Largest Garage Display!

PHILLIPS GARAGES

PHILLIPS GARAGES

South Windsor Option Taken By Post Office To Buy Land

United States postal authorities have taken an option on Main St. property of George Clark at the site of a new South Windsor Post Office.

Located next door to the present post office at Bowen's Store, the lot is 175 feet wide and more than 350 feet deep.

The building is to contain 1600 square feet of main floor space and will cover about 500 square feet of ground.

The site chosen carries on the wish of most local officials that the new post office be located near the present spot in Bowen's Store Building.

A two foot safe was stolen during a break at Frank's Pharmacy in Burditt Shopping Center on Oakland Rd. Wednesday night.

Little League farm teams will get into action Tuesday at 10 p. m. on both the Wapping and Pleasant Valley fields.

The 16 players making up each team have been outfitted with T-shirts and caps.

Church worship services at First Congregational Church will be held at 8:30 a. m. Evergreen Wood Chapter OES will worship in a group.

Grace Nicholson will be the soloist Summer conference delegates will be dedicated during the service.

That Bude's Wapping Grangers will worship in a group at the service to observe George Sunday.

Wapping Church At Wapping Community Church the Rev. W. H. Hitchcock will preach at the 9:30 a. m. worship service on the theme "The Tri-

umph of the Cross" at 10:30 a. m. following church.

Wapping Church At Wapping Community Church the Rev. W. H. Hitchcock will preach at the 9:30 a. m. worship service on the theme "The Tri-

umph of the Cross" at 10:30 a. m. following church.

Wapping Church At Wapping Community Church the Rev. W. H. Hitchcock will preach at the 9:30 a. m. worship service on the theme "The Tri-

umph of the Cross" at 10:30 a. m. following church.

Wapping Church At Wapping Community Church the Rev. W. H. Hitchcock will preach at the 9:30 a. m. worship service on the theme "The Tri-

umph of the Cross" at 10:30 a. m. following church.

Wapping Church At Wapping Community Church the Rev. W. H. Hitchcock will preach at the 9:30 a. m. worship service on the theme "The Tri-

umph of the Cross" at 10:30 a. m. following church.

Wapping Church At Wapping Community Church the Rev. W. H. Hitchcock will preach at the 9:30 a. m. worship service on the theme "The Tri-

Express Kills Noank Woman Slipped, June 18 (AP)—A woman was killed today by a New Haven railroad passenger train seconds after a freight train engineer stopped his train to help her.

Manhattan Evening Herald South Windsor correspondent writes G. Burnham, telephone MIchel 4-6674.

Rio de Janeiro—The Brazilian state of Pernambuco passed the 4,000,000 population mark last July, making it the fifth Brazilian state to exceed that level.

Manhattan Evening Herald South Windsor correspondent writes G. Burnham, telephone MIchel 4-6674.

Rio de Janeiro—The Brazilian state of Pernambuco passed the 4,000,000 population mark last July, making it the fifth Brazilian state to exceed that level.

Manhattan Evening Herald South Windsor correspondent writes G. Burnham, telephone MIchel 4-6674.

Rio de Janeiro—The Brazilian state of Pernambuco passed the 4,000,000 population mark last July, making it the fifth Brazilian state to exceed that level.

Manhattan Evening Herald South Windsor correspondent writes G. Burnham, telephone MIchel 4-6674.

Rio de Janeiro—The Brazilian state of Pernambuco passed the 4,000,000 population mark last July, making it the fifth Brazilian state to exceed that level.

Manhattan Evening Herald South Windsor correspondent writes G. Burnham, telephone MIchel 4-6674.

Rio de Janeiro—The Brazilian state of Pernambuco passed the 4,000,000 population mark last July, making it the fifth Brazilian state to exceed that level.

Manhattan Evening Herald South Windsor correspondent writes G. Burnham, telephone MIchel 4-6674.

Express Kills Noank Woman Slipped, June 18 (AP)—A woman was killed today by a New Haven railroad passenger train seconds after a freight train engineer stopped his train to help her.

Manhattan Evening Herald South Windsor correspondent writes G. Burnham, telephone MIchel 4-6674.

Rio de Janeiro—The Brazilian state of Pernambuco passed the 4,000,000 population mark last July, making it the fifth Brazilian state to exceed that level.

Manhattan Evening Herald South Windsor correspondent writes G. Burnham, telephone MIchel 4-6674.

Rio de Janeiro—The Brazilian state of Pernambuco passed the 4,000,000 population mark last July, making it the fifth Brazilian state to exceed that level.

Manhattan Evening Herald South Windsor correspondent writes G. Burnham, telephone MIchel 4-6674.

Rio de Janeiro—The Brazilian state of Pernambuco passed the 4,000,000 population mark last July, making it the fifth Brazilian state to exceed that level.

Manhattan Evening Herald South Windsor correspondent writes G. Burnham, telephone MIchel 4-6674.

Rio de Janeiro—The Brazilian state of Pernambuco passed the 4,000,000 population mark last July, making it the fifth Brazilian state to exceed that level.

Manhattan Evening Herald South Windsor correspondent writes G. Burnham, telephone MIchel 4-6674.

Rio de Janeiro—The Brazilian state of Pernambuco passed the 4,000,000 population mark last July, making it the fifth Brazilian state to exceed that level.

Manhattan Evening Herald South Windsor correspondent writes G. Burnham, telephone MIchel 4-6674.

Express Kills Noank Woman Slipped, June 18 (AP)—A woman was killed today by a New Haven railroad passenger train seconds after a freight train engineer stopped his train to help her.

Manhattan Evening Herald South Windsor correspondent writes G. Burnham, telephone MIchel 4-6674.

Rio de Janeiro—The Brazilian state of Pernambuco passed the 4,000,000 population mark last July, making it the fifth Brazilian state to exceed that level.

Manhattan Evening Herald South Windsor correspondent writes G. Burnham, telephone MIchel 4-6674.

Rio de Janeiro—The Brazilian state of Pernambuco passed the 4,000,000 population mark last July, making it the fifth Brazilian state to exceed that level.

Manhattan Evening Herald South Windsor correspondent writes G. Burnham, telephone MIchel 4-6674.

Rio de Janeiro—The Brazilian state of Pernambuco passed the 4,000,000 population mark last July, making it the fifth Brazilian state to exceed that level.

Manhattan Evening Herald South Windsor correspondent writes G. Burnham, telephone MIchel 4-6674.

Rio de Janeiro—The Brazilian state of Pernambuco passed the 4,000,000 population mark last July, making it the fifth Brazilian state to exceed that level.

Manhattan Evening Herald South Windsor correspondent writes G. Burnham, telephone MIchel 4-6674.

Rio de Janeiro—The Brazilian state of Pernambuco passed the 4,000,000 population mark last July, making it the fifth Brazilian state to exceed that level.

Manhattan Evening Herald South Windsor correspondent writes G. Burnham, telephone MIchel 4-6674.

Express Kills Noank Woman Slipped, June 18 (AP)—A woman was killed today by a New Haven railroad passenger train seconds after a freight train engineer stopped his train to help her.

Manhattan Evening Herald South Windsor correspondent writes G. Burnham, telephone MIchel 4-6674.

Rio de Janeiro—The Brazilian state of Pernambuco passed the 4,000,000 population mark last July, making it the fifth Brazilian state to exceed that level.

Manhattan Evening Herald South Windsor correspondent writes G. Burnham, telephone MIchel 4-6674.

Rio de Janeiro—The Brazilian state of Pernambuco passed the 4,000,000 population mark last July, making it the fifth Brazilian state to exceed that level.

Manhattan Evening Herald South Windsor correspondent writes G. Burnham, telephone MIchel 4-6674.

Rio de Janeiro—The Brazilian state of Pernambuco passed the 4,000,000 population mark last July, making it the fifth Brazilian state to exceed that level.

Manhattan Evening Herald South Windsor correspondent writes G. Burnham, telephone MIchel 4-6674.

Rio de Janeiro—The Brazilian state of Pernambuco passed the 4,000,000 population mark last July, making it the fifth Brazilian state to exceed that level.

Manhattan Evening Herald South Windsor correspondent writes G. Burnham, telephone MIchel 4-6674.

Rio de Janeiro—The Brazilian state of Pernambuco passed the 4,000,000 population mark last July, making it the fifth Brazilian state to exceed that level.

Manhattan Evening Herald South Windsor correspondent writes G. Burnham, telephone MIchel 4-6674.

Express Kills Noank Woman Slipped, June 18 (AP)—A woman was killed today by a New Haven railroad passenger train seconds after a freight train engineer stopped his train to help her.

Manhattan Evening Herald South Windsor correspondent writes G. Burnham, telephone MIchel 4-6674.

Rio de Janeiro—The Brazilian state of Pernambuco passed the 4,000,000 population mark last July, making it the fifth Brazilian state to exceed that level.

Manhattan Evening Herald South Windsor correspondent writes G. Burnham, telephone MIchel 4-6674.

Rio de Janeiro—The Brazilian state of Pernambuco passed the 4,000,000 population mark last July, making it the fifth Brazilian state to exceed that level.

Manhattan Evening Herald South Windsor correspondent writes G. Burnham, telephone MIchel 4-6674.

Rio de Janeiro—The Brazilian state of Pernambuco passed the 4,000,000 population mark last July, making it the fifth Brazilian state to exceed that level.

Manhattan Evening Herald South Windsor correspondent writes G. Burnham, telephone MIchel 4-6674.

Rio de Janeiro—The Brazilian state of Pernambuco passed the 4,000,000 population mark last July, making it the fifth Brazilian state to exceed that level.

Manhattan Evening Herald South Windsor correspondent writes G. Burnham, telephone MIchel 4-6674.

Rio de Janeiro—The Brazilian state of Pernambuco passed the 4,000,000 population mark last July, making it the fifth Brazilian state to exceed that level.

Manhattan Evening Herald South Windsor correspondent writes G. Burnham, telephone MIchel 4-6674.

Ribicoff and Son In San Francisco San Francisco, June 19 (AP)—Gov. Abraham Ribicoff of Connecticut and his son Peter are here to talk to industry, visit a school and discuss politics.

The governor arrived yesterday, he plans to speak Tuesday at a luncheon designed to encourage industry to support Connecticut.

A similar talk will be given in Los Angeles Thursday.

The governor arrived yesterday, he plans to speak Tuesday at a luncheon designed to encourage industry to support Connecticut.

A similar talk will be given in Los Angeles Thursday.

The governor arrived yesterday, he plans to speak Tuesday at a luncheon designed to encourage industry to support Connecticut.

A similar talk will be given in Los Angeles Thursday.

The governor arrived yesterday, he plans to speak Tuesday at a luncheon designed to encourage industry to support Connecticut.

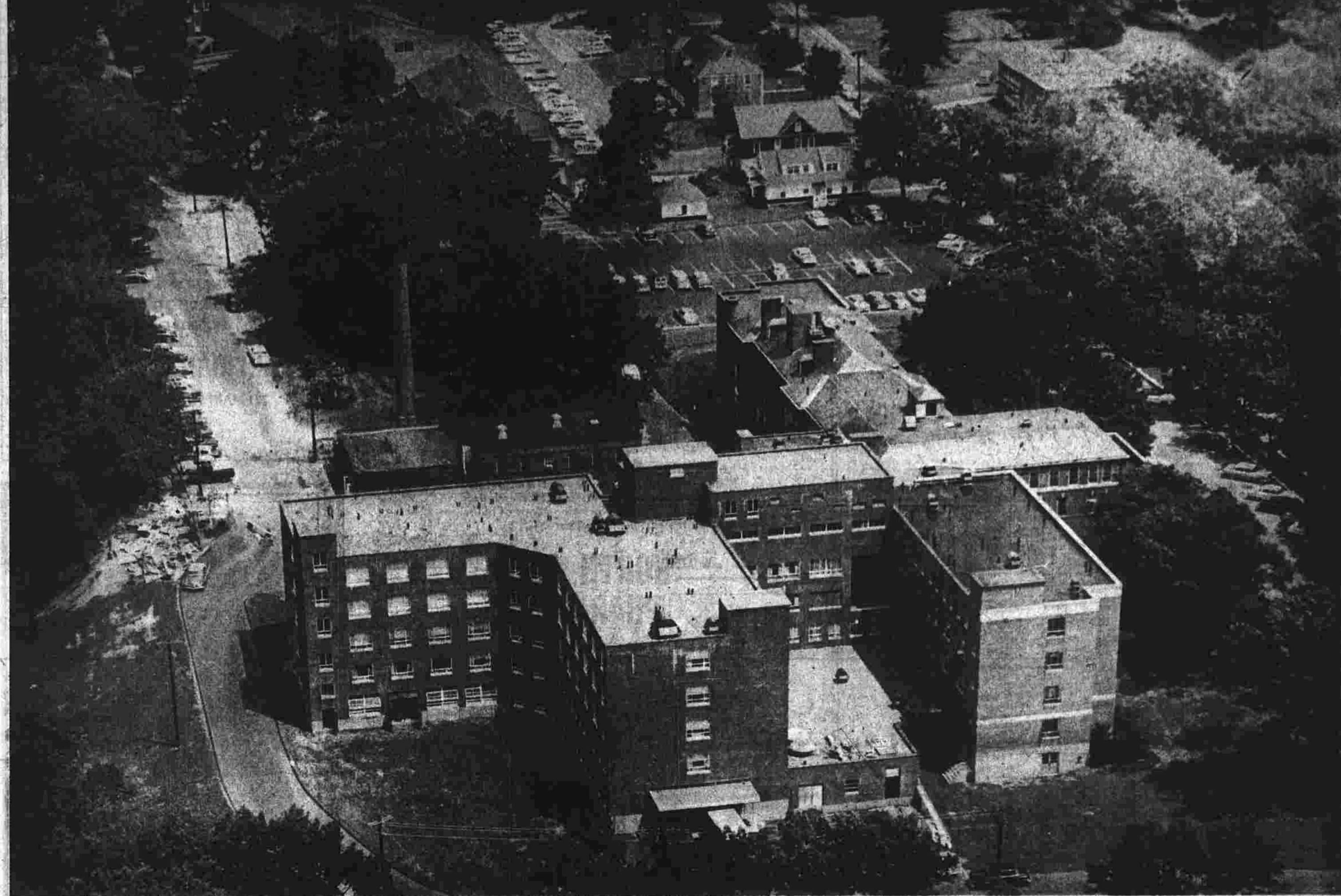
A similar talk will be given in Los Angeles Thursday.

The governor arrived yesterday, he plans to speak Tuesday at a luncheon designed to encourage industry to support Connecticut.

A similar talk will be given in Los Angeles Thursday.

The governor arrived yesterday, he plans to speak Tuesday at a luncheon designed to encourage industry to support Connecticut.

Manchester Memorial Hospital Dedicates Wing



New Chapter in MMH Story Starts at Wing Dedication

Dedication ceremonies for the new wing at Manchester Memorial Hospital will mark the end of 17 months of construction and the beginning of a new chapter in the hospital's history of patient care.

MANCHESTER MEMORIAL HOSPITAL DEDICATION PROGRAM... JUNE 20, 1959

JOHN D. LABELLE, Trustee, Presiding SALUTE TO FLAG DILWORTH-CORNEILL-QUEY POST NO. 102, Color Guard NATIONAL ANTHEM ANITA DION, at the Hammond Organ INVOCATION DR. LEON WIND, Rabbi, Temple Beth Shalom WELCOME HONORABLE EUGENE T. KELLY, Mayor REMARKS DR. JOSEPH MASSARO, President of the Medical Staff THE CHALLENGE C. ELMORE WATKINS, President Emeritus SERVICE OF DEDICATION REV. F. LAWRENCE ALMOND, Pastor, South Methodist Church

Flu in 1918 Showed Need for Hospital

An epidemic of influenza in 1918-1919 is the indirect cause of Manchester Memorial Hospital's existence. So many people were seriously ill and there was no place to care for them except an emergency room in Cheney Hall.

MARLOW'S FATHER'S DAY GIFT SPECIALS!

Lowline Aluminum STACK CHAIR \$5.49—2 for \$10.00 REG. 7.50 GIFT HASSOCKS From \$2.98 SMOKING STANDS From \$7.95 DESK LAMPS From \$4.75 FOLDING BEACH CHAIR, \$2.98 2 for \$5.00

GREAT APPLIANCES by NORGE at LOW PRICE Only at NORMAN'S

NORGE All New 1959 Automatic DRYER Automatic Door Switch Stationary Drying Rack Giant-Size Lint Screen

Your Choice 37. Take As Long As 30 MONTHS TO PAY at NORMAN'S

NORGE All New 1959 Electric RANGE 7-Heat Controls Hi-Speed Surface Units Spacious "Blended-Heat" Oven "Char-Coil" Speed Broiler Flush-to-Wall Design

NORMAN'S FURNITURE DEPT. YOU ALWAYS SAVE MORE AT... OPEN 9 A.M. to 9 P.M. SATURDAY UNTIL 7 P.M. 445 HARTFORD ROAD, Near McKEE

Four Levels of Care Pioneered by MMH

How sick are you? Since its last addition was built in 1933, Manchester Memorial Hospital has pioneered a program aimed around the answer to that question. The system, known as Progressive Patient Care, or PPC, gives maximum care for a minimum cost.

The program has four levels of care for the critically ill, routinely in ambulatory and long-term patients. From hour to hour or day to day the patient can be moved from one level to another as his physical needs—and not his pocketbook or social status—dictate.

The program was initiated April 1, 1957 when three units for critical, routine and ambulatory patients were included in the experiment were obstetrics and pediatrics.

A special care unit for critically ill patients was set in an existing unit of 26 beds. Fifteen of the beds were for the super-critical, and 10 of the beds in a "gray area" were critical. There was one nurse for every five patients and one nurse aid for every 10 patients in the super-critical area.

There was one nurse, one nurse aid, and one orderly for every 10 patients in the gray area.

Section athletes, heart attack victims, auto accident cases and patients recovering from major operations were placed in around-the-clock surveillance for 22 a day. No special nurses were needed, a saving of \$45 per day per patient.

As soon as the patient was well enough to be transferred to an intermediate unit, he was moved out of the special care unit.

Intermediate care was given to 27 patients in routine like fractures, appendicitis, tonsillitis, etc. Patients were handled in the same manner as in other hospitals. One nurse was needed for every eight patients and the charge per day for a semi-private bed was \$18.

Self-service care was started in a house across the street from the hospital. The house, called Crowell House, came to be known as the "Dr. H. Youself Unit." Patients in a late recovery stage or undergoing diagnostic tests or with mild mental disturbance were grouped in this unit.

They were all well enough to walk across the street to eat their noon and evening meals in the hospital cafeteria.

Patients made their own beds, dressed themselves, watched television, and ate as a group at a special table in the hospital. In this sort of country club atmosphere, only one nurse and one day maid were needed to take care of 11 patients at a cost of \$11 a day per patient.

The possibilities of this type of care proved tremendous. As many as 20 patients could be cared for by one nurse. If the patients needed only minor attention, such as temperature taking.

The exciting part of the entire system of care was that a patient paid for three types of care. Instead of a flat \$22 a day. Every time he was moved to a lighter care unit, the average cost of his stay went down. Yet he received the maximum care he needed.

If he spent five days in the special care unit, eight days in the intermediate, and two in self-service, the cost of his hospitalization was \$276. If he spent the entire 15 days in a semi-private room in any other hospital in the area, the cost would have been \$350, plus the cost of special nurses.

The effectiveness of the program was increased in August last year when a fourth area of patients was started. Long-term patients were started.

Called continuation care, the unit was started with seven beds on the first floor. Types of illnesses treated were multiple fractures, multiple skin grafts, cardiac cases, and terminal disease.



In the center of this unit for the critically ill is the new "patient bed" unit. Patient is visible to nurse.

Weden Letter Pays Tribute To Watkins

Elmer A. Weden, president of the Hospital Board of Trustees, is in California and will not be able to attend the dedication ceremonies. He sent a letter of congratulations to those who have worked so hard for the completion of the hospital.

His letter reads as follows: "I wish to pay particular tribute to Mr. C. Elmer Watkins, our president emeritus, as it was through his foresight and persistence that this wing, together with many other additions, have been made possible.

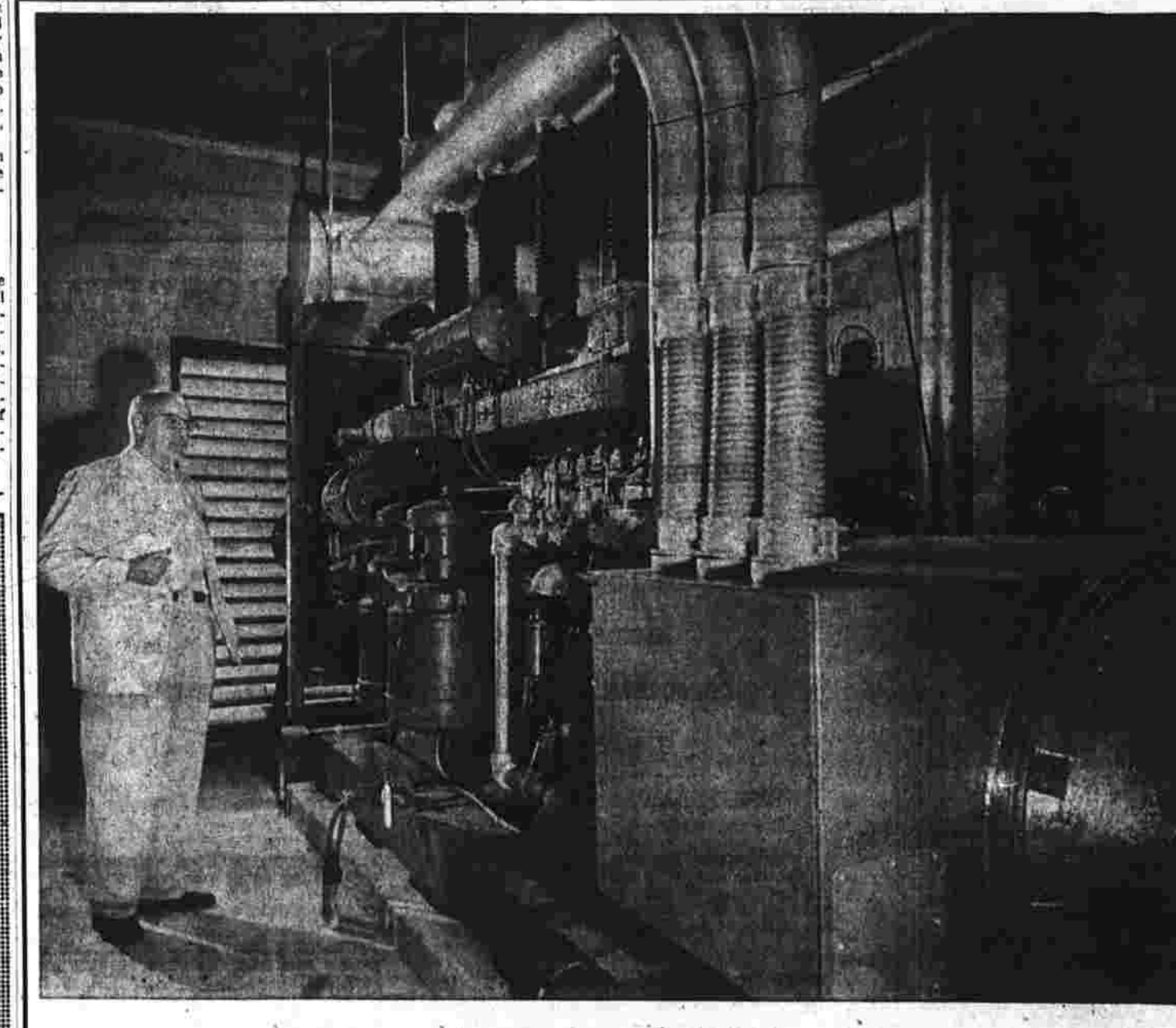
"I want to thank Mr. Raymond Goslee and Miss Jennie Wind and the Building Committee, together with the hospital organization, for their outstanding job and for the many hours which they have put in towards the planning of this project. It was through their efforts that we have been able to complete the hospital long before its original completion date and at a price within the amount designated by the Board of Trustees."

Elmer A. Weden, President Board of Trustees

The New and Larger NORTH END PHARMACY

heralds the new addition to the Manchester Memorial Hospital and tenders congratulations and best wishes in the Hospital's endeavor to continuously serve the growing needs of Manchester with the best in hospital care.

NORTH END PHARMACY
Your All-Purpose Store
4 DEPOT SQUARE
MI 9-4585
WE DELIVER



Now! 275,000 WATTS of EMERGENCY POWER
FOR THE MANCHESTER MEMORIAL HOSPITAL
GUARANTEEING FULL ELECTRICAL POWER IN EVENT OF REGULAR POWER FAILURE

ALLIS CHALMERS DIESEL ELECTRIC GENERATOR
FURNISHED AND INSTALLED BY

THE MITCHELL ELECTRIC CORPORATION
ELECTRICAL CONSTRUCTION 685 PARKER STREET EMERGENCY POWER

ARCHITECTURAL WOODWORK
For the new addition to the Manchester Memorial Hospital supplied by

THE TARIFFVILLE MFG. CO.
Tariffville, Conn. OL 8-7681

LATHING METAL FURRING PLASTERING
IN THE NEW ADDITION TO THE MANCHESTER MEMORIAL HOSPITAL DONE BY

Herman T. Zieger
721 MAIN ST., HARTFORD, CONN.
JACKSON 2-5470

HEATING and VENTILATING
For the new addition at the Manchester Memorial Hospital done by

Libby and Blinn, Inc.
135 SHELDON ST.—HARTFORD, CONN.

WE WERE A SUPPLIER OF MATERIAL FOR THE NEW ADDITION AT THE MANCHESTER MEMORIAL HOSPITAL

WILLIAM PECK LUMBER, Inc.
2 MAIN ST.—PHONE MI 9-5295

Dr. Lundberg Served On First Medical Staff

While the streamlining and weaning of the physical plant of Manchester Memorial Hospital have been starting, the changes in the staff have been even more so, according to Dr. George A. F. Lundberg Sr., chief of the medical staff.

From a bunch of well-meaning pushing prima donnas the medical staff has been toughened to a smoothly synchronized, thoroughly competent team.

"This was a dreary little town when I first came here," he said. "Cheney Bros. controlled everything—the electric companies, the mills, even most of the homes. And they had the medical center, so for a long while the town didn't need a hospital. The medical center took care of the needs of the town. Almost everybody worked for Cheney Bros."

Came in 1920
Dr. Lundberg came to Manchester in 1920. He had just completed his internship at Hartford Hospital, and had met Dr. D.C.V. Moore who showed him plans of MMH and invited him to visit the town. Dr. Lundberg took him up on the invitation, liked what he saw, and decided to set up his practice here.

In this aptly of cracks by other doctors on the staff of Hartford Hospital, that Dr. Lundberg could "buy a gun on one side of the main street and shoot on the other."

Dr. Lundberg was the youngest of the 14 doctors who composed the first staff of the hospital in 1920.

In fact the second youngest doctor had been practicing for 25 years. The doctors were set in their ways, so he felt that no one could ever displace him. He stayed during the first few months. The result was each doctor took care of all his own patients in the hospital.

He would operate for appendix trouble, deliver babies, set fractures, everything.

"They practiced like doctors near the Canadian border," says Dr. Lundberg.

Clearing House
The hospital was no more than a central location for the doctor's patients to gather, a clearing house for him. The doctors often went so far as to confide to the patient what medication was needed, and tell the nurses to mind their own business. Some of the patients used to hide their pills under the pillows at their doctor's orders, so the nurses couldn't find the pills.

Despite the confusion, the doctors and gave them the best care they could under the circumstances. They also related to give care to charity patients each doctor giving a month of his time.

The first staff included Dr. Edward B. Allen, Dr. Noah Burr, Dr. Clarence C. Burlingame, Dr. LeVerne Holmes, Dr. Robert P. Knapp, Dr. George W. May, Dr. Moore, Dr. Thomas G. Sloan, Dr. William E. Tinker, Dr. Harry R. Rharpe, Dr. Thomas H. Walden, and Dr. Francis H. Walton.

In addition to these men were Dr. Lundberg, and a dentist, Dr. Edward G. Dolan. Dr. Dolan's inclusion on the staff is not listed anywhere in the minutes of the Board of Trustees, but is listed in a diary kept by Dr. Lundberg at that time.

Only One Still Living
Of all the men on the original staff, only Dr. Lundberg is still living.

It was not until 1923 that the staff agreed to divide the medical care by departments. The department of medicine consisted of Dr. Burr, Dr. Sloan, Dr. Sharpe, and Dr. Lundberg. Dr. Gildersleeve of Hartford, became the head visiting surgeon, with Dr. Moore as first assistant.

Others on the surgical staff were Dr. Joseph Higgins, Dr. Knapp, Dr. Allen, Dr. Holmes, Dr. Arthur B. Moran, and Dr. Harry S. Reynolds.

Dr. Lundberg handled the obstetrics and gynecology, and Dr. Lundberg Sr., chief of the radiology department was handled by Dr. Douglas J. Roberts, director and roentgenologist, and Dr. Moore roentgenologist.

The consultant staff was composed of Dr. Walden, Dr. Tinker, and Dr. May.

First President
The first president of the staff was Dr. Sloan. The first secretary was Dr. Burr. And the first executive committee consisted of Dr. Moore, Dr. Lundberg and Dr. Sloan.

Dr. Joseph E. Imbeau was the first resident house officer. He was a graduate of McGill University, and served until 1924. Dr. Moore who showed him plans of MMH was followed by Dr. Amos E. Fryard, who later became president of the Hartford County Medical Association.

Others who served as residents included Dr. William Conlon, Dr. Robert E. Keenan, Jr. and Dr. Donald W. Morrison, who served as resident on the medical staff.

There are three sons of early doctors who are themselves doctors on the hospital staff. Dr. George A. F. Lundberg Jr., son of Dr. Lundberg Sr., is in the department of medicine. Dr. David L. Caldwell Jr., son of Dr. and Mrs. Caldwell Sr., is in the departments of gynecology and obstetrics. Dr. Robert J. Roberts Jr., associate in the radiology department, is the son of Dr. Douglas J. Roberts and the late Dr. Douglas J. Roberts Sr., who was for 30 years the head of the radiology department.

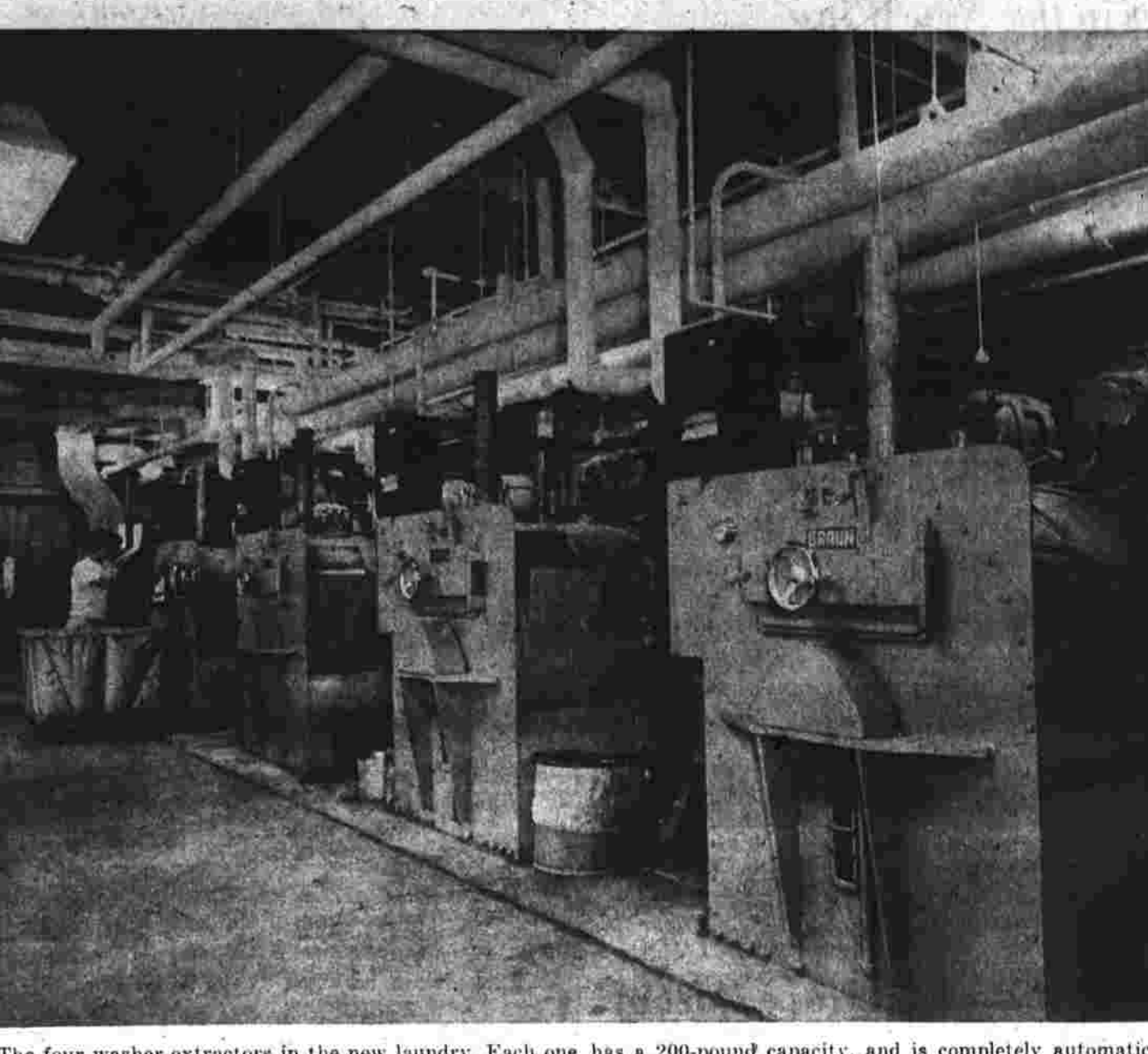
These three are all native sons of Manchester. Others who are native to Manchester are Dr. Mortimer Murray, Dr. Sidney Dr. Merrill Robinson and Dr. Joseph Massaro.

Dr. Massaro says of the staff today: "We are served by other hospital staffs because we don't have the jealousy, the frictions, the cliques of other staffs. Our staff is permeated with a mutual respect. In fact we have been asked to write a story for a medical journal on the ideal cooperation of the staff."

Besides the mutual respect of one doctor for another, Dr. Massaro credits the attitude of the late Dr. Moore for the present "other hospital staffs are controlled by the older men and by cliques," said Dr. Massaro. "Dr. Moore always used to give the young men a helping hand."

14 Departments
From having six departments, the staff has swelled to more than 14 departments. These include eye-ear-nose-throat, medicine, anesthesiology, cardiology and P.K.G. dentistry, gynecology, obstetrics, orthopedics, pathology, pediatrics, radiology, surgery and urology.

In addition to the active staff, the hospital also has a courtesy and consulting staff of more than 50 doctors.



The four washer-extractors in the new laundry. Each one has a 200-pound capacity, and is completely automatic.

To The Manchester Memorial Hospital
Congratulations and Thanks...
For Meeting Our Needs

MICHAEL DWORKIN, Registered Pharmacist

LIGGETT
DRUG STORES
GET YOUR NEXT PRESCRIPTION FILLED AT LIGGETT'S
MANCHESTER SHOPPING PARKADE
WEST MIDDLE TURNPIKE - MI 9-2348

Everyone is pointing with pride to the newest addition to the

MANCHESTER MEMORIAL HOSPITAL

Now a Better and Larger Manchester Memorial Hospital, Dedicated to One Greater Manchester Community!

Marlow's is proud to be such a vital part of the community which is served by our hospital.

We are also proud of the fact that Marlow's has grown from modest beginnings over 47 years ago—to Manchester's best known department store!

MARLOW'S
FIRST FOR EVERYTHING FOR OVER 47 YEARS!

Laundry Can Handle Soiled Linen Easily

The new laundry room in the addition to Manchester Memorial Hospital is equipped to handle the one week more soiled linen that most of us will see in a good long time.

The giant machines in the sub-basement of the new western wing can handle 18,000 pounds of soiled linen a week, and that without really trying.

The capacity of the old laundry unit, located in the building to the north of the hospital was 10,000 pounds a week. If nothing broke down.

"We can handle all the laundry and more here later on if necessary," said Curtis Wilcox, hospital engineer.

The soiled laundry, all of it is enclosed in laundry bags, is sent to be cleaned via a chute in the center of the building. The liners are sorted and weighed into baskets with 100-pound capacity.

Then the liners are popped into one of four enormous washer-extractors, the pride of the laundry room. Each washer has a 200-pound capacity.

47-Minute Process
Forty-seven minutes later, the laundry having been extracted, rinsed, bleached, rinsed, pressed, and folded, is ready to be either sent to one of two dressers in the Krollier iron.

The clothes dried in a 20- or 25-minute process in the dressers are baby clothes, towels, patients' gowns, facecloths, and some blankets. These are removed and folded by hand.

The clothes sent to the Krollier iron are sheets, operating room and patient linens, and the like. They are first placed on a spreader, then fed into the iron at the rate of 80 feet a minute. While they are in the iron they pass through a temperature of 300 degrees. Sterilization temperature is only 200 degrees.

When the liners have gone through the iron, they are folded automatically and spotted with a table which is just outside a huge pass-through to the laundry storage department.

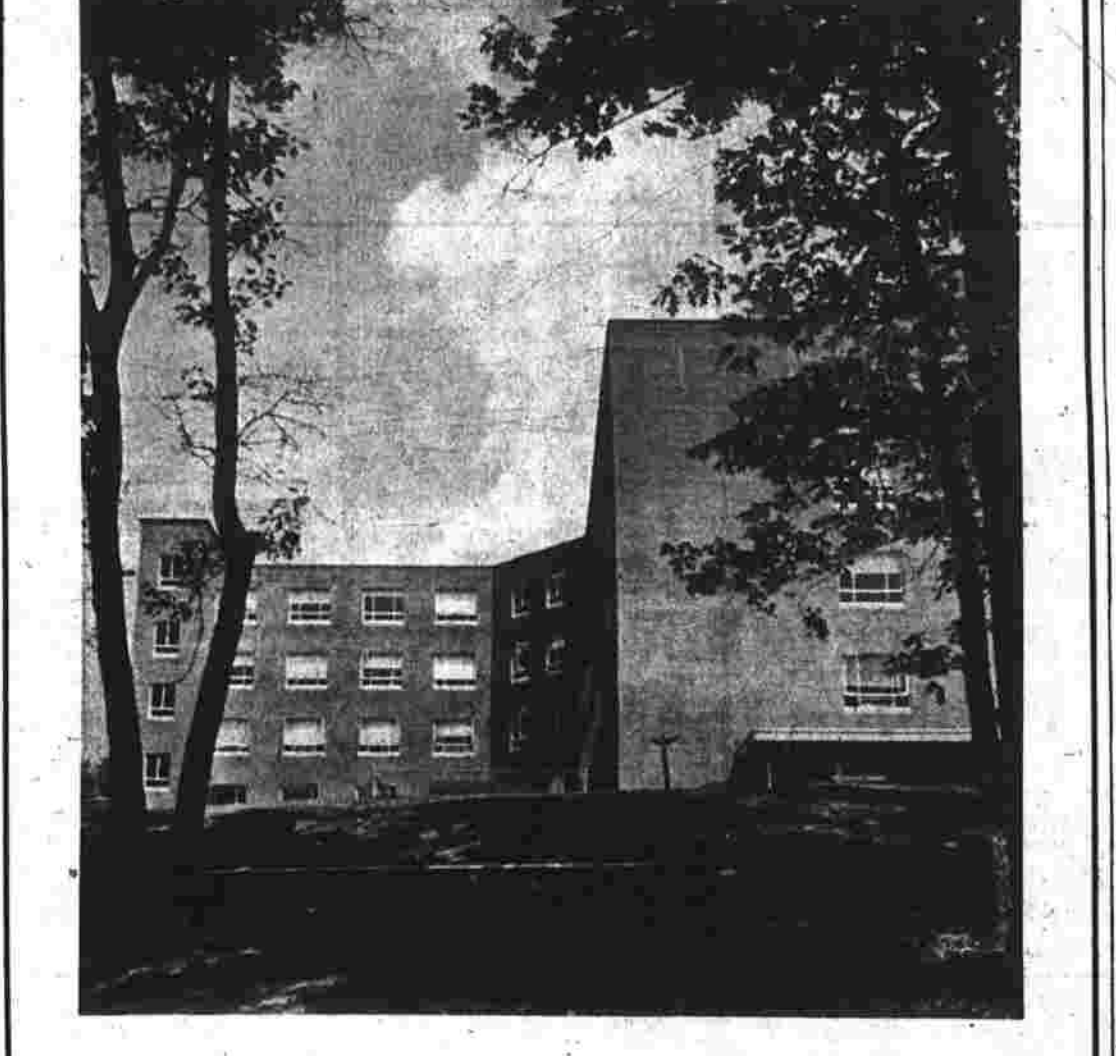
Few Pieces Ignored
A few pieces, or multiply few pieces, must be ironed on one of two steam presses. Such things as uniforms for the Women's Auxiliary and Junior Auxiliary and patients' gowns are ironed here.

All of the clean laundry is then taken to the linen room where it is sorted and placed on shelves. When it is needed, it is piled on carts and distributed.

Number of people who staff the laundry department varies. They are elected for 24 months. All of whom must be corporators. They are elected for 24 months. One-third of the Board being elected at each biennial meeting.

AHA Member 25 Years
Manchester Memorial Hospital has belonged to the American Hospital Assn. for 25 years. It is one of 21 Connecticut hospitals to have 25-year membership in the national association.

Nearly one in three hospital emergency room patients is an accident victim. Accident victims spend more time in the hospital, on the average, than other patients.



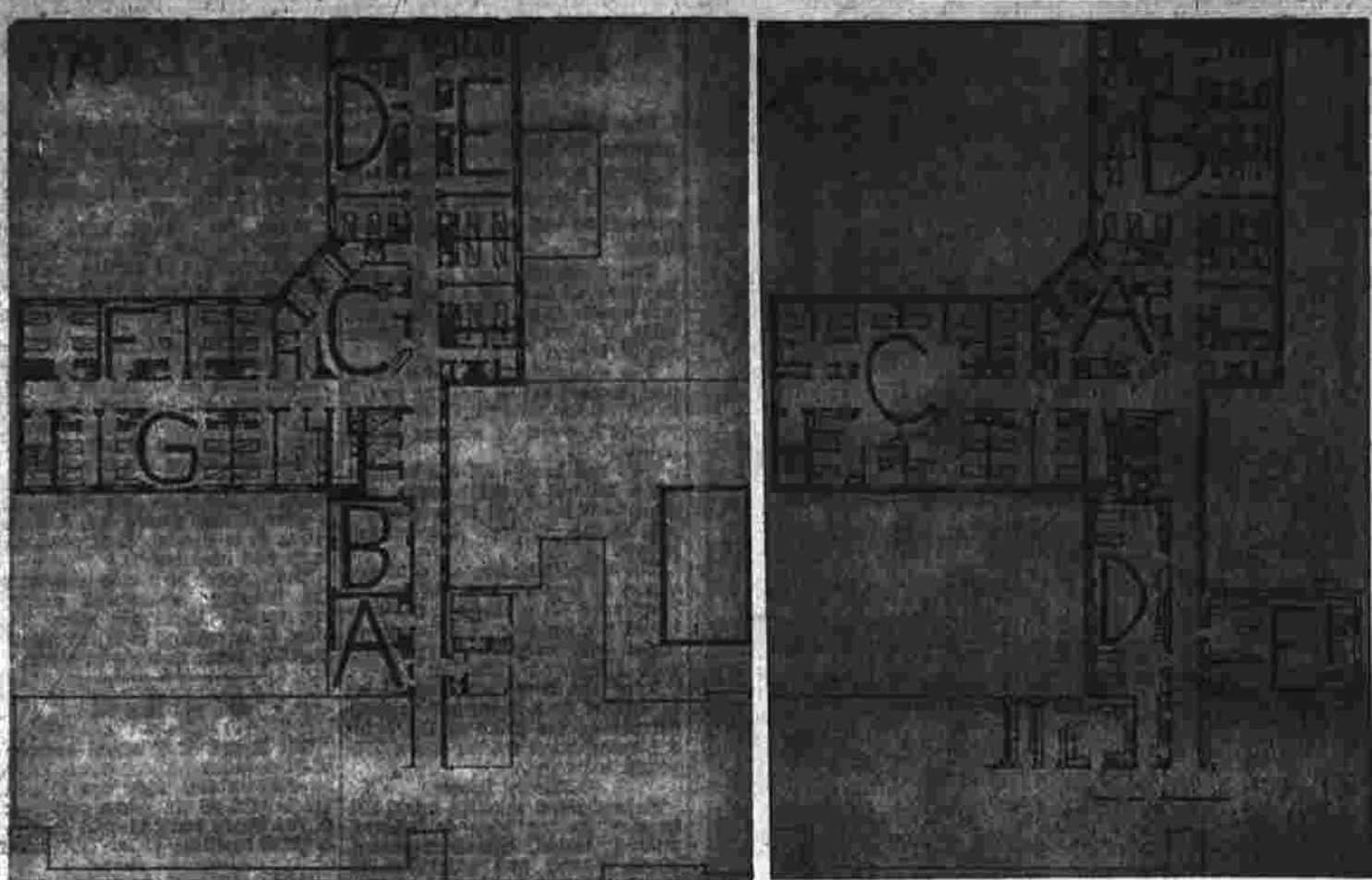
THE **WADHAMS & MAY** CO.
BUILDERS
15 LEWIS STREET
HARTFORD 3, CONNECTICUT

General Contractors

For The New Addition To The Manchester Memorial Hospital

19 JUN 1959

Plans of the Four Floors in the New Wing



First and Second Floors: A, Chapel; B, Day Room (for visitors); C, Nurses Station; D, E, F, and G, Self Service Units.

Third Floor: A, Nurses Station; B and C, General Care Units; D, Recovery Room; E, Central Sterile Supply.

30 Hospitals Have Part of Patient Care

Thirty hospitals in this country are known to have one or more units of progressive patient care. Many of these hospitals have the intensive unit, a few have the self service unit, but none have all four units.


Those hospitals which have an intensive care unit are Mary Hitchcock Memorial Hospital in Hanover, N. H.; Albany, N. Y.; Hospital, Philadelphia; St. Joseph Hospital, St. Paul, Minn.; Rhode Island Hospital, Providence, R. I.; Ravenswood Hospital, Chicago; Duke University Hospital, Durham, N. C.; Rochester Methodist Hospital, Rochester, Minn.; Memorial Center Hospital, New York City; Quincy, Mass. City Hospital; New England Baptist Hospital, Boston; UCLA Medical Center, West Los Angeles, Calif.; St. Vincent's Hospital, Jacksonville, Fla.; Presbyterian St. Luke's Hospital, Chicago; St. Mary's Hospital, Rochester, Minn.; University of Virginia Hospital; Medical College of Virginia, Richmond, Va.; and St. Francis Hospital, Hartford.

Those hospitals which have both the intensive care and the self service care are St. John Lutheran Hospital, Charles V. Miller Hospital, and St. Luke's Hospital, all of St. Paul, Minn.; Santa Barbara Cottage, Santa Barbara, Calif.; and New England Deaconess in Boston.

Those which have just the self service are Huntington Memorial Hospital, Pasadena, Calif.; and Hartford Hospital.

On Original Board C. Elmore Watkins, president of Watkins Bros. Furniture is the last living member of the original Board of Trustees of Manchester Memorial Hospital. A drug prescription has been written on papyrus in 3200 B. C.

milestone of service to growing Manchester and its people



The opening of the new wing of the Manchester Memorial Hospital—third addition to the facilities of this fine institution—means greater service to the health and well-being of Manchester's people.

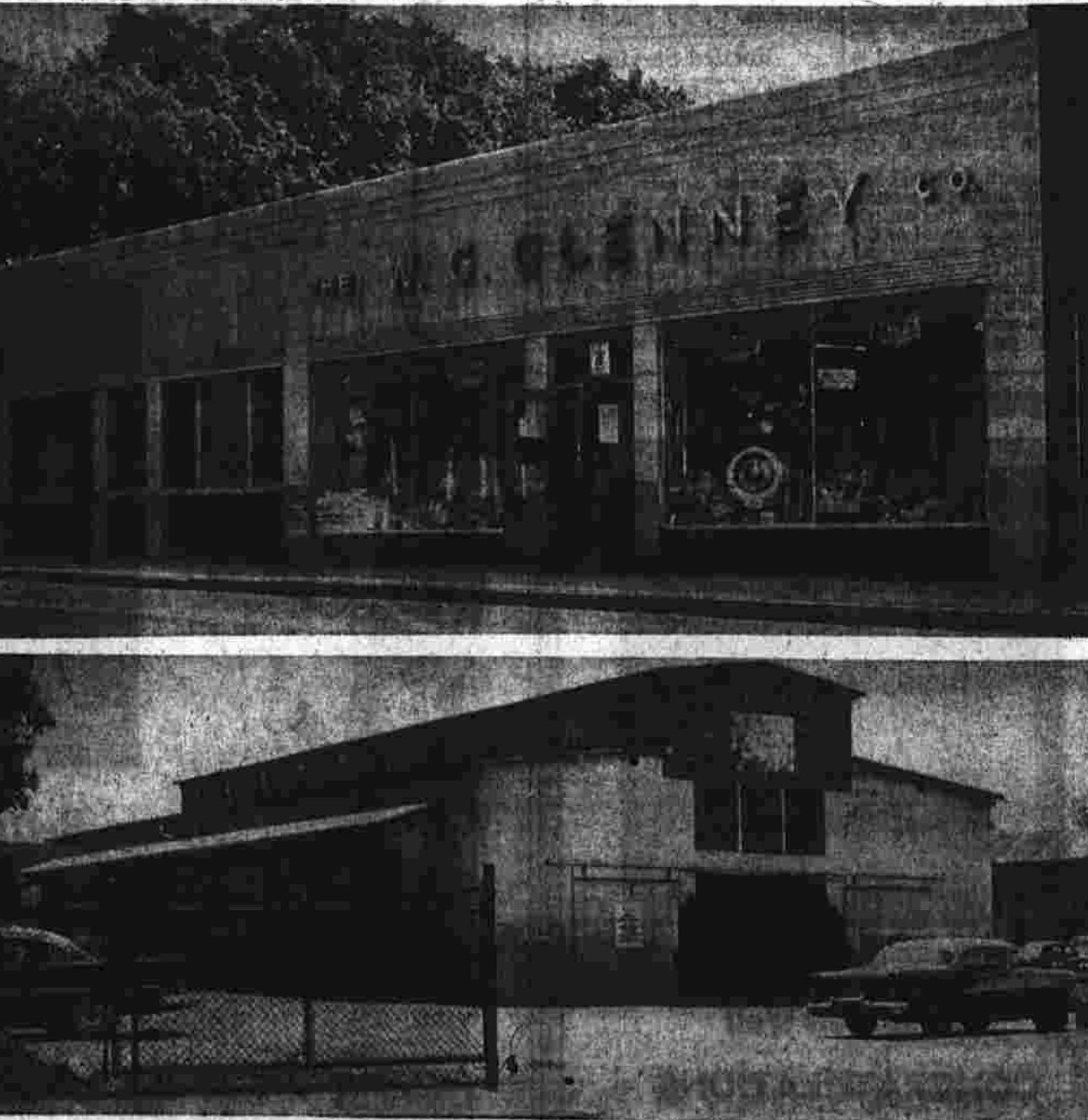
This new wing of our hospital has other significance, as well... it is evidence of the sound way in which Manchester has always prepared for growth and expansion. This is certainly one good reason why Manchester has such a solid place in the hearts of those who have come to live here.

In this event, too, we see testimony to the continuing growth of this community... a growth that we can see increasing almost daily.

The Connecticut Bank AND TRUST COMPANY

Manchester Offices: 893 Main Street • 15 North Main Street

GROWING WITH MANCHESTER!



Our business has seen a continued expansion of facilities and merchandise, thanks to the people of Manchester and surrounding towns. We are presently completing a new yard in Ellington to serve more people in this part of Connecticut.

We congratulate and salute the Hospital on its continued growth in capacity to serve Manchester and surrounding towns.

THE W. G. GLENNEY CO.

326 N. MAIN STREET MANCHESTER

All Facilities Can Be Run By Generator

If all the electrical power in Manchester should suddenly be cut off, what would happen to the hospital?

The hospital has just finished installing a 210,000-watt standby diesel generator, one of the largest diesel generators in this area. The generator is capable of supplying power for every piece of machinery in the hospital, including the operating room lights, air conditioning, elevators, laundry machines and refrigerators.

Several days ago the hospital shut off the regular power. Within four seconds the standby generator had everything running just as before.

The refrigerator for the blood bank continued to run. So did the water pump and fuel pumps for the boiler, the elevators, the regular electric lights, the stores, the compressors in the laboratories and the X-ray machines. So did the machines in the admitting office, the television set in the day room, the clocks, the oxygen and suction equipment and the coffee maker in the kitchen.

The \$48,000 machine was installed by the Mitchell Electric Corp.

It was paid for by the hospital and by a federal grant. The grant was made through the Civil Defense Administration, and amounted to \$24,000.

Oldest Intern

At one time Manchester Memorial Hospital had the oldest intern in the country. He was Dr. Jacob Tennent, who was about 55 when he came to this country from Germany in 1843. Dr. Tennent, although he had practiced for many years in his own country, did not have the proper papers to practice in this country. He served as an intern from 1843 to 1849, many times on 24-hour duty. He managed to bring his wife to this country, getting her out of a concentration camp. He is now on the staff of the Central Islip Hospital in New York.

TOOTH MOVEMENT GAUGED

Chicago—An instrument called a tooth odometer measures the distance of teeth will move in your head. Devised by researchers for health studies, it can gauge movement of as little as one 200-millionth of an inch.

Two out of three tuberculosis victims are men.

Room Meets Needs Scalpel Can't Touch

Tucked away in five stories of brick and steel designed to meet every physical emergency possible is a special emergency room to handle troubles no scalpel can touch.

The room is a chapel. Non-sectarian and available to everyone, the public as well as the patients, the chapel will be open around the clock. It will be a place where relatives can go to wait out the long hours of an operation, or a husband can pray that all goes well for his wife and infant, or a family can receive some solace in the first hour of bereavement.

In the past, families have had to wait in the main lobby while a relative was undergoing an operation. Doctors had little privacy in which to tell a family that a loved one had died. The only place where a family could go for solace in bereavement was the front steps of the hospital.

In the worst case, a family-two white candles in heavy brass holders, and by a low vase of fresh white flowers. Since the room is non-sectarian, there is no cross or crucifix, and no star of David.

The lights which focus on the altar, and the lights near the pews, have separate controls. Both sets of lights can be gradually dimmed or brightened. The lights over the altar are recessed, but the lights near the pews are wrought of metal in a classic 3-sided pattern finished in brushed gold to match the color of the dossal.

The ceiling is made of acoustical tile, and the ventilation is provided by a concealed system designed by Curtis Wilson, hospital engineer. The heat is controlled by a thermostat.

The chapel is located on the first floor of the hospital between the old and the new additions. It has double hinged doors, marked only by a small mahogany plaque.

To Serve Intended Purpose

The new addition has enabled the hospital to increase its surgery facilities 20 per cent. Before the addition was built the hospital had been using one of its four operating rooms as a recovery room. Since here is a large recovery room in the new addition adjacent to the operating rooms, the old recovery room can be used for its intended purpose.

Emergency Room Gets Facilities Long Needed

With the construction of the new hospital addition, the emergency room—one of the most important medical services—will have the facilities it has needed since the hospital was built in 1915.

The new emergency unit is located on the ground floor rear of the north wing.

It consists of four rooms which occupy the whole end of the floor, and are separated from the rest of the hospital by double doors.

Ambulances will reach the emergency entrance from Artery St. They can pull up to the door of the emergency unit vestibule under a covered archway.

The vestibule is spacious enough for the storage of stretchers, ready for immediate use. A window in the wall between the vestibule and the nurses station will permit the nurse to see instantly when an ambulance has arrived.

The emergency room is a big one, big enough to treat two patients simultaneously. It has facilities for setting fractures, making casts, and performing surgery.

Two regulation operating room lights, one of them imported from Germany, have been installed over the two operating tables. These lights are key equipment for performing surgery.

The emergency room has two scrubbing sinks for the surgeons, and a sink with a special catch control of temperature. One-half the room can have warmth at the same time the other is receiving fresh, cool air, or both can be the same temperature.

There are oxygen and suction outlets near each bed, and a nurses' calling buzzer. The buzzer will operate a light on a panel at the nurses' station, instead of a light over the door of the ward.

Adjacent to the nurses' station is a special storage and preparation room. Serums, bandages, instruments and the like will be kept here. A special sterilizer has been installed in the room, so that instruments can be sterilized in seven minutes instead of the usual 30 minutes.

In the old emergency unit, the ward will be used for accident victims admitted in the middle of the night, for patients recovering from minor surgery, and for patients who have not needed much treatment but do need a short rest before going home.

Like the emergency room, the admitting ward has ceramic tile flooring. The room is a cheerful one, with two large windows that have a view of the woods west of the hospital. A lack of windows in the old admitting ward was one of the old unit's chief drawbacks. The old room was gloomy, dark and sometimes had smelling.

The beds in the new room will be in regular wards.

Ventilating Units Two ventilating units in the admitting ward will permit a greater

We Take Great Pride in Congratulating the Manchester Memorial Hospital On Its Great Progress

SHANE has

IN THE NEW ADDITION TO THE MANCHESTER MEMORIAL HOSPITAL
SIDNEY SHANE, Inc.
60 LaSalle Road—Phone AD 3-2673
West Hartford 7, Conn.



THE J. W. HALE CORP.
MANCHESTER'S LEADING DEPARTMENT STORE

AND

C. E. HOUSE & SON, INC.
MANCHESTER'S OLDEST ESTABLISHED RETAIL BUSINESS

Congratulate the Manchester Memorial Hospital on the completion of its third expansion, bringing it up to 300-bed capacity.

The **J.W. HALE CORP.** MANCHESTER CONN. CORNER MAIN AND OAK STREETS

C.E. HOUSE & SON
WE GIVE 24 GREEN STAMPS

Hail to the greater Manchester Memorial Hospital

WE oldsters who were present when you were born and helped care for you when you were little can scarcely believe our eyes when we look at you now... a towering adult ranking with the larger institutions of the town.

If our information is correct, you are now 40 years old, have assets of over four million dollars, employ 450 people, and do an annual business of over two million dollars.

Moreover, you have become an indispensable part of our economy and our daily living.

We take pride in your record and congratulate you on the completion of this latest and most extensive addition.

Watkins
OF MANCHESTER

TRANSIT MIX CONCRETE

For The New Addition To The Manchester Memorial Hospital Furnished By

MANCHESTER SAND and GRAVEL COMPANY

60 ADAMS STREET MANCHESTER



1959 JUNE 19

Women's Auxiliary Boon to Hospital

The Women's Auxiliary of Manchester Memorial Hospital has been almost since the day the hospital opened to provide vital medical equipment as well as the nurses a breakfast and a second-sala hospital.

The women raise money through many projects, and they serve voluntarily in many capacities in the hospital.

In November 1923, three years after the opening of the hospital, the Women's Auxiliary was formally organized with Miss Helen Chapman as president. Prior to 1923 a group of women had looked after the nursing and making new articles useful in hospital service. They had the guidance and inspiration of Miss Helen Chapman, superintendent of the hospital from 1922 until 1929, whose personality and ideas left a lasting imprint on the hospital and the auxiliary.

On Nov. 9, 1923, the following women met and formed the executive committee of the hospital auxiliary: Mrs. Lawrence Case, Mrs. W. C. Cheney, Mrs. Carl Bengt, Mrs. Mary Hutchinson, Mrs. E. A. Lettney, Mrs. George May, Mrs. Henry Nettleton, Mrs. Edna Case Parker, Mrs. Wolcott, and Miss Helen Chapman, First Chairman.

This group chose Mrs. Cheney as the first chairman, Mrs. Bengt as vice chairman, Mrs. Nettleton, secretary, and Mrs. May, treasurer.

Following the formal organization, the membership divided into four groups, one meeting each on Monday, and all groups meeting every fifth Monday.

One sewing group was composed of Miss Dorothy Cheney, Mrs. Kenneth Blake, Mrs. William Packis, and Mrs. Elizabeth Bond. Another group was composed of Mrs. R. O. Cheney, Mrs. Albert Mathers, Mrs. Albert Dewey, and Mrs. George Cheney.

A third group was Mrs. Paul Ferris, Mrs. LeVerna Holmes, Mrs. Edwin Lyden, and Mrs. J. W. Nickerson.

The fourth sewing group was Mrs. William Skofick, Mrs. Wilbur Loveland, Mrs. Robert Sedel, and Mrs. James Wilson.

Their meeting places were needed, and included Watkins Bros. store, the East Side Recreation Center, T.M.C.A. Center, Congregational Church, and the Nurses' Home. For a number of years an additional group met at the home of Mrs. John P. Cheney, where much sewing was accomplished. (From 1923 to 1935 the auxiliary raised and donated a total of \$4,852.) These groups also raised money for the hospital by holding food sales, musicals, and song recitals. They were able to donate \$400 to the trustees of the hospital by the end of 1932.

Many of the members worked individually. For instance, in January 1925 Miss Edna P. Cheney and Mrs. J. H. Vint volunteered to give separate bridge parties to purchase nurses' caps. By 1929 through their fund-raising projects, which by this time included rummage sales in empty stores, and garden parties, this energetic group was able to present the hospital with \$1,037.

In the spring of 1933 it was decided to try a new method of raising money. An Easter Ball was held at the Hotel Bond on April 19th. Mrs. Mary Danaher was general chairman. The ballroom was donated through the courtesy of William Rogers. Two-hundred and sixty-one attended, and the auxiliary netted \$418.

A second dance was held the following year, with Mrs. Charles Fisher in charge. A third, with Mrs. W. R. Tinker Jr. as chair, was successfully accomplished with receipts of \$478. The

last ball given in the hotel Bond ballroom was Dec. 1, 1944, and the auxiliary netted \$1,080.90.

During these years there were many church groups making surgical dressings for the auxiliary. These groups and their leaders included the following:

Salvation Army, Mrs. Pickup; Congregational Church, Loyal Circle, King's Daughters, Mrs. D. Muldoon; Talcottville Church, Missionary Society, Mrs. Moore; Center Church, Group C, Mrs. Hadley; Emmanuel Lutheran Church, Durcas Society, Mrs. Johnson; Gil-ead Ladies Auxiliary, Mrs. Doris Hutchinson; Salvation Army, Friendly Society, Mrs. Bertha Hall; Beta Sigma Phi, Mrs. Franklin; St. Mary's Church, Mrs. Burnap; Second Congregational, Mrs. Jennie; Center Congregational, Mrs. Pickler; Holy Ghost Mothers Circle, Mrs. Malone; W.C.T.U., Mrs. Watkins; Center Church, Bathany Group; Friendly Circle, Second Congregational, Mrs. Bradley; St. Bridget's Church, Helen Tierney; Center Church, Loyal Circle, Mrs. Belcher; Center Church, Grace Group, Concomitan Club, Mrs. D. M. Caldwell; Eveready Circle, King's Daughters, Mrs. Borst.

There were also many individuals who were working alone. Among these were Mrs. L. Hoyt, Mrs. Anderson, Mrs. Tucker, Mrs. K. Burr, Mrs. William Shea, Mrs. Arthur Fellault, Mrs. Howe, Mrs. Albert Dewey, and Mrs. Schardt.

Concentrate Activities

With the addition of a new hospital wing in 1941, all the work of the auxiliary was concentrated at the hospital. In 1940 the Manchester Women's Auxiliary joined the Connecticut Association of Hospital Auxiliaries and found the benefits derived from this association most rewarding. The auxiliary is also a member of the American Hospital Assn.

In 1944 it was decided to raise money by having a bazaar. This was called the "Country Fair" and was held in October with all the members contributing in some form, and \$1,982 was raised. A second bazaar was held the following year. The fair was discontinued after this time because most of the churches enlarged their fair plans and the auxiliary did not want to conflict with them.

With the completion of the new wing of the hospital in February 1952, the auxiliary provided hostesses, or guides from their membership for the open house. They also underwrote the new coat of Dedication Book \$1,400. This brochure was completed and 2,300 were distributed at the dedication of the new wing and through the Welcome Wagon, to new residents of Manchester.

During Mrs. Elmore Watkins second term as president of the auxiliary, one of the main projects for raising funds was a Tour of Homes held in October, 1933.

Among those who opened their homes to the public were Mrs. R. Learned, William C. Fisher, Frank D. Cheney, Herman Tinsman, Alexander F. Manning, C. Elmore Watkins, Dr. Charles Jacobson, Mrs. George H. Waddell, Dr. David M. Caldwell, Judge Charles R. House and Mrs. Edgar H. Clarke.

The Garden Club, through Miss Ellen Buckley and her committee, arranged for flowers for the open house. The Howell Cheney Technical School made wooden signs that were placed before the homes. Mr. and Mrs. Herbert Swanson prepared programs which were decorated on the front cover with a picture of the Herman Tinsman home, drawn by Mrs. Richard Olmsted, and at the end of the tour tea was served at the South Methodist Church, which was also opened to the public.

In this same year the trustees

Heartiest Congratulations

TO..... MANCHESTER MEMORIAL HOSPITAL

ON THE OPENING OF A NEW ADDITION TO FURTHER EXTEND ITS FINE SERVICES TO THE COMMUNITY.

MANCHESTER DRUG
NEED MOBER PH.G. REG PHARMACIST
717 MAIN STREET



A good many girls who were playing house when their mothers were customers at Pinehurst are now running their own home and also shopping at Pinehurst.

Like the Manchester Memorial Hospital we have been established quite a while. Progress is all important in any business. We are pleased with the progressive growth of the Hospital. We congratulate its trustees, officers and medical staff attaining 300-bed capacity.

Pinehurst Grocery, Inc.

PLUMBING

For the new addition at the Manchester Memorial Hospital

C. H. CRONIN, Inc.

12 BRYON ST.—BOSTON 8, MASS.
60 EAST 42nd ST.—NEW YORK N. Y.



As a participant in the construction activities we congratulate the hospital on its new addition.

Andrew Ansaldi Co.
MASON CONTRACTORS
BIDWELL ST.—PHONE MI 9-5249



CEMENT FORM
PLYWOOD
FOR CONSTRUCTION PURPOSES
AT THE NEW HOSPITAL
ADDITION SUPPLIED BY

MANCHESTER LUMBER, INC.
255 CENTER ST.—PHONE MI 3-5144



EXCAVATION
AND SITE WORK

For the new addition to the Manchester Memorial Hospital done by

E. B. McGURK, INC.
355 Harbour St. —Hartford, Conn.



Colors for the corridors were selected by Miss Anna Sampson, a hospital trustee.

Strange Parades Moving to Wing

During the time the hospital was moving furniture and equipment into the new addition, many strange parades formed in the basement.

One of them was led by dietitian Mrs. Marion Dowling, who was carrying two large white lamps.

shades at the time. She was followed by a straggling corps carrying a brown paper package with four wooden legs protruding from it, and a couple of dolls loaded with more brown paper packages from which protruded smaller wooden legs at odd angles.

The basement corridor near the old emergency room is a narrow one, and nurses and other employees reporting to work could not pass the little parade, with the result the string of people became larger and larger. And everyone marched in time to the cadence sounded off by Mrs. Dowling: "Everybody's doing it, doing it... everybody's doing it."

14 on First Staff

The first staff of the hospital numbered 14 doctors. Today the staff has 38 members.

YOU'RE COVERED!



• BEFORE

Sickness or accidents you're covered if you have adequate insurance.

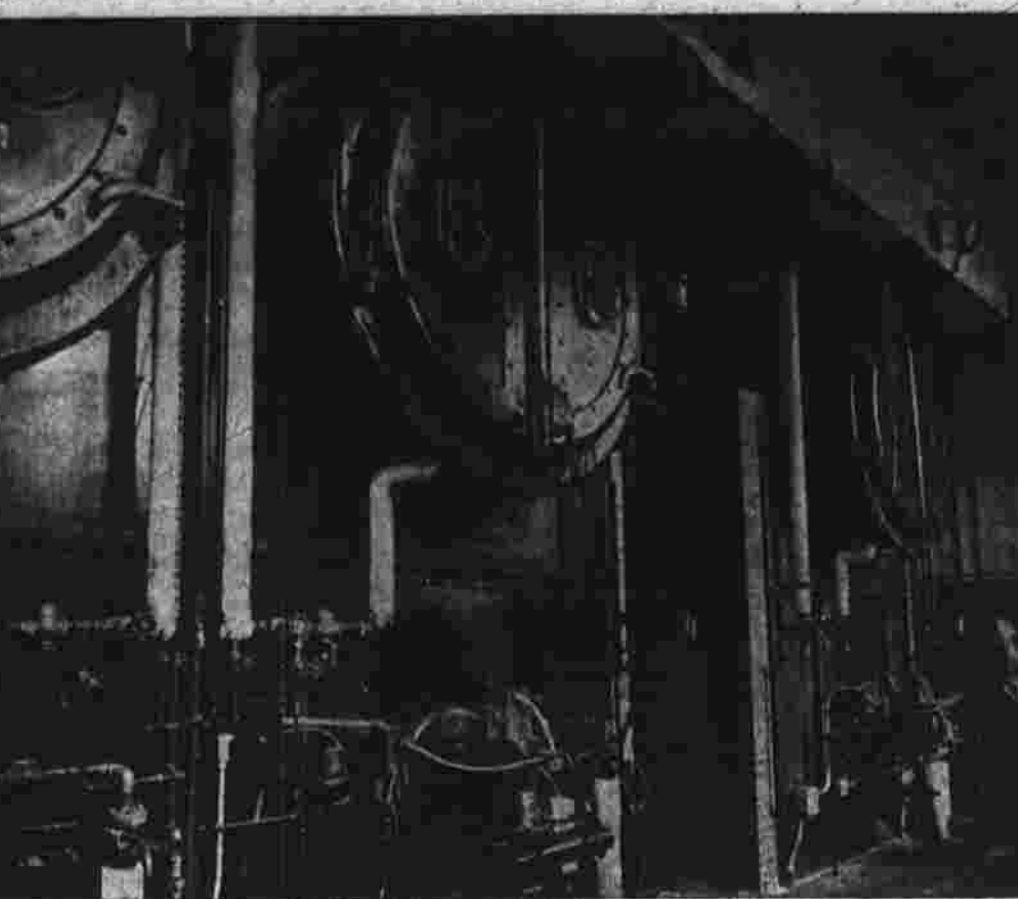
• AFTER

Emergencies of any kind involving your health, Manchester Memorial Hospital gives you 24 hours a day coverage. The doors are always open.

TODAY

We salute Manchester Memorial Hospital upon the dedication of their latest addition designed to further improve their already fine services.

Robert J. SMITH
REAL ESTATE
INSURANCE
INCORPORATED
285 MAIN ST., GROUND FLOOR — TEL. MI 9-3541
"INSURANCE SINCE 1914"



Added facilities in the boiler room will provide heat for the new wing.



SAFEGUARDING

The physical well being of you and your family

MANCHESTER MEMORIAL HOSPITAL

TODAY... we join with the whole town in extending congratulations to Manchester Memorial Hospital upon the opening of its newest addition. Here's an institution of which the town can be justly proud.

SAFEGUARDING

YOUR FINANCIAL WELL BEING SINCE 1891



HERE'S HOPING!

You'll never need to spend any length of time in a hospital.



BUT IF YOU DO

You can be SURE of the very best of professional care in your own Manchester Memorial Hospital.

Today—we salute the hospital—and all who serve in it—upon the further expansion of their facilities.

MORIARTY BROTHERS

301-315 Center Street

1936 JUN 19

Women's Unit Boon to MMH

(Continued from Page Twenty-Four)

The Penny Saver, a thrift shop managed completely by volunteers and stocked with items donated by the membership, opened its doors on Nov. 4, 1958, with a debt to the auxiliary of \$300 for starting expenses. The debt has been repaid and the board meeting on April 23, the Penny Saver gave the treasurer a check for \$2,000. With a full \$4000 year, they expect this amount to be doubled next year.

There are six other auxiliary-sponsored services within the hospital. The Gift Cart makes the rounds of the hospital twice a week, bringing the wanted to Gift Shop to the bedside of the patients. Thirty volunteers have staffed the information desk in the lobby during the past year for a total of 1,128 hours. Forty-two volunteers relieved the nurses of routine tasks five mornings each week. The decorative committees brightened the hospital with seasonal decorations four times a year.

The Junior Auxiliary was organized in the summer of 1956 with seven girls, aged 14 to 21. The original members were Susan Buckley, Elaine Poole, Peggy Bond, Jeanette Hill, and Colleen Blanton. Lorraine Pitcher and Colleen Blanton were formerly organized on Nov. 1, 1956. Mrs. Alfred Sundquist served as advisor to the group, which now has 58 members who have worked 2,214 hours this past year. The board of directors of the auxiliary finances the purchase of uniforms and has a representative on its board to present all problems of the juniors as they arise. After a junior member has given 50 hours of service, she is capped; after 100 hours she receives a junior auxiliary pin in recognition of her service.

The last volunteer service within the hospital has a fold purpose: it serves the hospital, and it encourages an increasing interest in the hospital throughout the community. The public relations committee was suggested by the hospital administrator and was formed in 1957. It was headed by Mrs. Jacob Miller, who had as her committee Mrs. Melvin Horvath, Mrs. Gilbert Barrow, Mrs. C. Foster Harry, Mrs. Robert Waldron, Mrs. Seymour Yelver, Mrs. Billman Keith, Mrs. Lane Giddings, Mrs. Don Gilman, Mrs. Charles Griffith and Mrs. Robert Forman.

A liaison committee was formed in 1957 also. This committee's function was to meet once a month with the administrator to coordinate the functions of the auxiliary to meet the needs of the hospital.

The auxiliary is proud of the fact that during 1958-1959 it has given over 2,500 hours of service to the hospital, and that, by its efforts, it has earned \$6,770.33. Over the years, its fund-raising projects have brought new linen, much-needed equipment, kitchen conveniences and a share in building the additions to the hospital. Through the way and means projects, the Women's Auxiliary has given \$33,765.20 to the hospital from 1923 until the present year of 1959.



Two ambulatory patients enjoy a snack in the kitchenette next to a self service unit.

Physiotherapy Room Ready for Patients

The physiotherapy department is ready for the patients who will need help to heal muscles and bones. The new addition has five cubicles for massage and workouts, a cubicle for two whirlpools, and an exercise room. A great deal of the new equipment has been assembled here to help the patient through many stages of recovery. In the whirlpool room are an arm whirlpool and a leg whirlpool. In the therapy area are an hydrocollator which makes hot, moist packs for acute muscle strains; a microthermer, an automatic traction machine which can apply traction for specified rounds; and specified lengths of time; two infrared lamps, the paraffin bath, and an ultra-violet ray. The hot, moist packs produced by the hydrocollator are used for burns and whiplash injuries as well as other severe strains. The paraffin bath is used on the hands of patients with arthritis, or on the stumps of amputees. The infrared lamps are also used for muscular strain. The ultra-violet lamp is used for cases of skin disease or lack of vitamin D.

Besides these machines, there is also a mediator-ultrasound machine. This one acts on the cells, stimulating the nerve cells through sound wave and electricity. Sometimes when a non is broken the nerves nearby are damaged so they don't pick up messages from the brain, or if they do they don't pass the messages along to the muscles. This machine takes over for the nerve, and passes the message directly to the muscle.

Medical Writers Quick To Pick Up PPC Story

Medical writers all over the country were quick to pick up the excitement among hospital administrators over Progressive Patient Care at Manchester Memorial Hospital. The first article to feature the system was written by former Herald reporter Don Friedman April 2, 1957, the day after the self-service unit in Crowell Hall was opened. "The experiment may have far-reaching effects," wrote Friedman. "One of the major aims of the conversion is to provide a blueprint which other similarly situated hospitals can use as a guide to preparing their own programs."

A few months later, with medical men all over the country keeping a close watch on the program, the prediction was realized. The U.S. Public Health Service in September chose the hospital as a model of this type of care. With the entrance of the Health Service on the scene, the number of articles written on the system shot up.

Write for AP Top Associated Press News Service writer Alton L. Blakeslee wrote an article which was used all over the country, entitled, "Fed Better's Pay Less." Herald reporter Judith Ahearn wrote a special feature, also for the Associated Press, which was used all over New England and New York State.

Then two major medical journals ran long studies of the system. The Journal of the American Medical Assn. ran an article in the April 1958 issue, entitled, "At Last—A Hospital to Fit Doctor-Patient Needs." The article written by Milton Golin, cautiously predicted a revolution in hospital care.

The idea that appealed to him, besides the lowered costs and more effective care, was that "because only the doctor would decide when his patients were ready for transfer from one toned unit to another, he would be brought into more intimate contact with the hospital than he is under existing conditions."

Surveyed System The May 1958 issue of the Modern Hospital carried an article on the system, including the results of a survey of the nurses at MMH. Nine progressive patient care units were started.

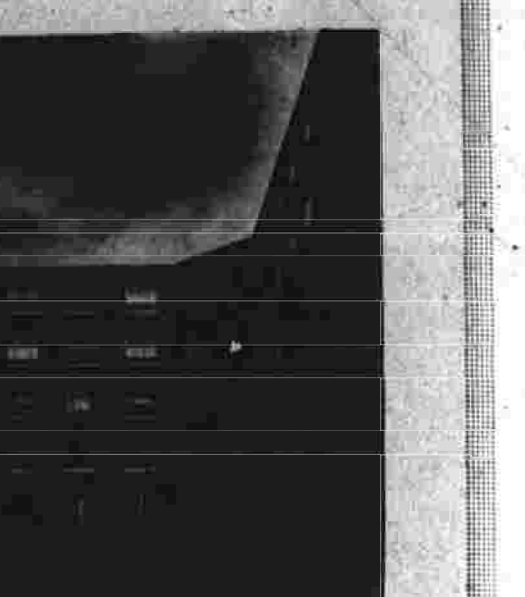
The survey, made by a doctor from the Washington Bureau of the Health Service, showed considerable interest in the system.

"Patients are treated in a shorter period of time... at Manchester Memorial Hospital... with full utilization of all hospital facilities including the medical and nursing teams."

(Continued on Page Twenty-eight)

One Woman Doctor

During its 38 years, Manchester Memorial Hospital has had only one woman doctor on its staff. She was Dr. Florence Marsh, who left Manchester to practice in Jerusalem.



REINFORCING RODS MESH and STEELTEX

FOR THE NEW ADDITION TO THE MANCHESTER MEMORIAL HOSPITAL SUPPLIED and INSTALLED BY

SCHERER STEEL COMPANY

602 TOLLAND ST., E. HARTFORD, CONN.

MANCHESTER MEMORIAL HOSPITAL

BOARD OF INCORPORATORS
Mrs. Edson M. Bailey, President
Robert E. Beach, Vice President
Walter J. Hendall, Secretary
Thomas Bentley, Treasurer
Charles S. Burr, Chairman
Richard S. Carpenter
Robert C. Freeman
Thomas F. Ferguson
Christopher Glemney
Edward H. Glemney
Walter F. Gorman
Raymond W. Goode
C. Foster Harry
Charles E. House
Carl Hollins
Jack R. Hunt
John D. LaBelle
Mrs. Cain L. Mahoney, Trustee

OFFICERS
C. Elmore Watkins, President Emeritus
Elmer A. Weden, President
The Connecticut Bank and Trust Company, Manchester Branch, Treasurer

EXECUTIVE COMMITTEE
Jacob F. Miller, Chairman
Mrs. Lennie B. Wind, Vice Chairman
Fred J. Rendall, Secretary
Charles E. Burr, Treasurer

HONORARY TRUSTEES
Sidney Ellis, Robert E. Hathaway, Jay E. Rand, Mrs. Clarence H. Wickham

ADMINISTRATION
Edward J. Thomas, Administrator
Miss Eva M. Johnson, Assistant Administrator
Mrs. M. Vera Dwyer, R.N., Director of Nursing

ARCHITECT
Ebbsitt, Frid and Prentice

CONSULTANT
Dr. Anthony J. J. Bourke

GENERAL CONTRACTOR
Wadhams and May

ACTIVE STAFF
Robert J. Alsbury, M.D.
W. Howard Baldwin, M.D.
Joseph C. Barry, M.D.
Edward L. Besser, M.D.
Howard Boyd, M.D.
Robert K. Butterfield, M.D.
David M. Caldwell, M.D.
David M. Caldwell, Jr., M.D.
William L. Conlon, M.D.
Richard M. Demko, M.D.
A. Elmer Diskin, M.D.
John R. Eddy, M.D.
Morris C. Fancher, D.D.S.
Amos E. Friend, M.D.
Lene Giddings, M.D.
Peter B. Gram, M.D.
Don A. Gilman, M.D.
Charles R. Hamilton Jr., M.D.
Thomas M. Healy, M.D.
Francis W. Helfrick, M.D.
Frank R. Horton, M.D.
Melvin Horvitz, M.D.
Charles E. Jacobson Jr., M.D.
Robert E. Keesey Jr., M.D.
Harold J. Lehman, M.D.
Howard J. Lockward, M.D.
Edwin J. Lofwick, D.D.S.
George A. F. Lundberg, M.D.

COURTESY STAFF
John J. Allison, D.D.S.
John F. Barry Jr., D.M.D.
Robert P. Bowen, M.D.
Larry N. Dutton, D.M.D.
Louis T. Foley, D.D.S.
Harold P. Fields, D.D.S.
Jean-Louis Hebert, D.D.S.
Robert S. Kennon, D.M.D.
Joseph J. Krizan, M.D.
John L. Phiffer, M.D.
Robert C. Schwartz, D.D.S.
Courtney H. Simpson, D.D.S.



This lounge for ambulatory patients is furnished in beige, coral, white and brown. Cheney oil paintings were donated.

Repairs Planned For Older Wings

Changes in the older parts of Manchester Memorial Hospital will be made in the coming months. Raymond W. Goode, chairman of the Building Committee, listed several projects which are sure to be made, and several projects which are still in the discussing stage.

First, the present kitchen will be renovated. This project will be let out to bid almost immediately. Along with the kitchen will be the old portion of the Women's Auxiliary Room.

This project will take about three months to complete. Other projects which are sure to come are repainting of the patient's rooms, and reroofing of the operating room which has been used as a recovery room.

Another sure project is the enlargement of the Gift Shop off of the lobby. Plans are now to knock out the wall between the shop and the former purchasing agent's office, to allow storage space for the shop.

The purchasing agent will have a new office in the new addition. A project which is still in the discussing stage is the re-roofing of the first and second floors, and Goode.

Another tentative project is to change the present x-ray department by taking over the room formerly used by the laboratory. This would give the x-ray department 400 or 500 more square feet of space.



Materials for the new addition to the Manchester Memorial Hospital. Supplied and erected by

CONN. ACOUSTICS

412 NEW PARK AVE. P.O. Box 133—West Hartford 10, Conn.

Best Wishes

It is gratifying to know that when sickness strikes we have adequate hospital facilities. We compliment the management of the hospital on its new addition and its increase to 300-bed capacity.



Quinn's Pharmacy 873 Main St., Manchester

We join the community IN THANKS

Thanks to those who have worked so hard to make the expansion of the Manchester Hospital a reality.

The Green Pharmacy

CHARLES A. BARBATO, Registered Pharmacist 501 E. MIDDLE TURNPIKE M1 9-1445

MILK Is A Basic Food

We supply hundreds of Manchester families and we also supply the Manchester Memorial Hospital.

DART'S DAIRY

315 E. CENTER ST.—PHONE M1 3-4430



IMPROVING THE HEALTH OF THE INDIVIDUAL— THAT'S THE HOSPITAL'S BUSINESS

IMPROVING THE APPEARANCE OF THE INDIVIDUAL'S HOME— THAT'S OUR BUSINESS

Plantland Where All Gardening Needs Are Satisfied
OPEN 7 DAYS A WEEK MONDAY, TUESDAY, SATURDAY, SUNDAY 9:30 to 6 P.M.
WEDNESDAY, THURSDAY, FRIDAY, 8:30 to 8 P.M.
1215 TOLLAND TURNPIKE, MANCHESTER—M1 9-2508
If your home needs a complete landscaping or a "Face Lifting" let us help you.



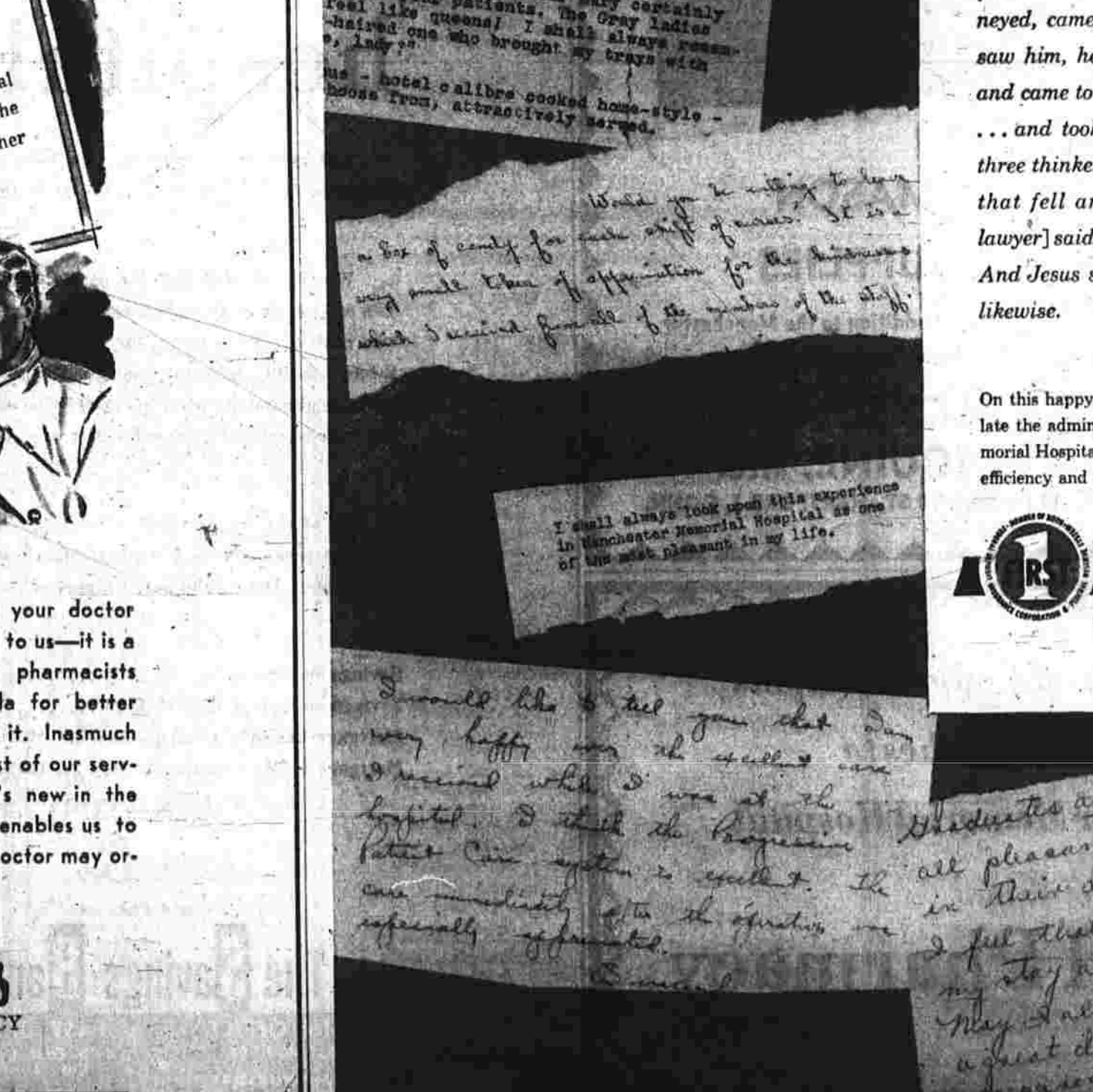
CONGRATULATIONS

The Manchester Memorial Hospital and to the members of its staff on the opening of another wing to further improve their services.

WE'RE IN BUSINESS FOR YOUR HEALTH, TOO!
What's written on the prescription your doctor gives you may be "Greek" to you, but to us—it is a concise medical "Recipe." And our pharmacists follow it exactly, to give you a formula for better health just as your doctor prescribed it. Inasmuch as our prescription service tops the list of our services to you, we keep up with all that's new in the Pharmaceutical-medical world, which enables us to anticipate the newest products your doctor may order for you.

Waldon's PRESCRIPTION PHARMACY

901 MAIN STREET INTEGRITY • SERVICE • SAFETY



MANCHESTER OFFICE

Hartford National Bank and Trust Company

But a certain Samaritan, as he journeyed, came where he was; and when he saw him, he was moved with compassion, and came to him, and bound up his wounds...

...and took care of him. Which of these three thinkest thou, proved neighbor to him that fell among the robbers? And [the lawyer] said, He that showed mercy on him. And Jesus said unto him, Go, and do thou likewise.

LUKE X

On this happy occasion, we are pleased to congratulate the administrators and staff of Manchester Memorial Hospital for their uncommon blending of quiet efficiency and gentle compassion.



MANCHESTER OFFICE

Hartford National Bank and Trust Company

THE Herald Angle BY EARL YOST Sports Editor

Jovial Sam's Pitching Debt Recalled "I'll never forget the first time that I ever pitched in an organized baseball game..."

There were no antics in the stands and Sam's baseball career to say in sports, based on boxing...

Seven in All Some weeks back John Lyons of the John Hancock Insurance Co. in Manchester...

After New Honors New laurels in his chosen sport, track, will be sought by New England...

High Priced UConn boated the highest priced outfield in New England college ball baseball this season...

Fast Mile Thanks to Charlie Robbins, M.D., my faithful truck turned out to be a 1958 Buick Wildcat...

As good as it looks and it looks plenty good! GOOD YEAR TIRE SALE!

rock-bottom priced at only \$295* Fits most pre-1957 models of Plymouth, Ford, Chevrolet, Nash, Hudson, Nash, Studebaker.

1195* 1485* 1625* Fits most pre-1957 models of Plymouth, Ford, Chevrolet, Nash, Hudson, Nash, Studebaker.

TURNPIKE PROVED No Down Payment When You Trade In Your Old Tires!

NIGHOLS-MANCHESTER TIRE, Inc. 295 BROAD ST. MI 3-5179

Pirates Continue to Roll Braves Still Breathing

New York, June 19 (AP)—Milwaukee's battered Braves, still breathing hard after last night's seven-run lead at Los Angeles, trudge into San Francisco with a half-game National League lead...

Braves' 7, Dodgers 6—The Braves won only two of three games at Los Angeles, built a 7-0 lead in four innings, getting one in the second when Roger Williams gave up a base-loaded walk...

Big Jim to Teach Jimmy Moriarty, manager of the Hartford Wolf Pack, called the Hartford Twilight and Farmington Valley Leagues has been engaged to teach...

Winning and runner-up in yesterday's Jayco Golf Tournament at the Manchester Country Club...

Undeclared Cuban Trio Box at Garden Tonight Three undefeated Cuban fighters, with a combined record of 22 straight knockouts...

White Sox Banking on Rookie To Remain in Thick of Race The White Sox' prospect hope for the long ball they require to remain in the thick of a wide-open American League race...

McMillan Got Homer Range Only to Break Bone in Hand The accident happened in St. Louis and Dr. J. C. Middleman, the Cardinals' physician, said he'd repair the injury...

Any One of Seven Traded Would Help Detroit Needs First Baseman Kaline battling for the American League batting championship?

As good as it looks and it looks plenty good! GOOD YEAR TIRE SALE!

rock-bottom priced at only \$295* Fits most pre-1957 models of Plymouth, Ford, Chevrolet, Nash, Hudson, Nash, Studebaker.

1195* 1485* 1625* Fits most pre-1957 models of Plymouth, Ford, Chevrolet, Nash, Hudson, Nash, Studebaker.

TURNPIKE PROVED No Down Payment When You Trade In Your Old Tires!

Game Postponed Weatherman won out again in his determined battle to halt the scheduled softball exhibition between the Doctors and Lawyers...

Plans now call for the two teams to meet on a Sunday afternoon, date to be announced, at Roborator Park. Sponsoring the affair will be the Women's Auxiliary of the Manchester Memorial Hospital.

Balding Leads Canadian Golf With 66 Score Montreal, June 19 (AP)—Lack of sleep and a tired feeling hardly can be regarded as a formula for winning in elite golf...

White Sox Banking on Rookie To Remain in Thick of Race The White Sox' prospect hope for the long ball they require to remain in the thick of a wide-open American League race...

McMillan Got Homer Range Only to Break Bone in Hand The accident happened in St. Louis and Dr. J. C. Middleman, the Cardinals' physician, said he'd repair the injury...

Any One of Seven Traded Would Help Detroit Needs First Baseman Kaline battling for the American League batting championship?

As good as it looks and it looks plenty good! GOOD YEAR TIRE SALE!

rock-bottom priced at only \$295* Fits most pre-1957 models of Plymouth, Ford, Chevrolet, Nash, Hudson, Nash, Studebaker.

1195* 1485* 1625* Fits most pre-1957 models of Plymouth, Ford, Chevrolet, Nash, Hudson, Nash, Studebaker.

TURNPIKE PROVED No Down Payment When You Trade In Your Old Tires!

NIGHOLS-MANCHESTER TIRE, Inc. 295 BROAD ST. MI 3-5179

TURNPIKE PROVED No Down Payment When You Trade In Your Old Tires!

Crucial Four Game Set Starts Tonight Yanks Threaten Indians' Lead

New York, June 19 (AP)—Cleveland steams into New York tonight for the first of what should be four frenzied games with the Yankees in a weekend series that could jar the Indians out of the American League lead...

Yankees, although winning four of the other cities, just by one inning of relief for the Birds Dave Staley 1-1 in relief.

Any One of Seven Traded Would Help Detroit Needs First Baseman Kaline battling for the American League batting championship?

As good as it looks and it looks plenty good! GOOD YEAR TIRE SALE!

rock-bottom priced at only \$295* Fits most pre-1957 models of Plymouth, Ford, Chevrolet, Nash, Hudson, Nash, Studebaker.

1195* 1485* 1625* Fits most pre-1957 models of Plymouth, Ford, Chevrolet, Nash, Hudson, Nash, Studebaker.

TURNPIKE PROVED No Down Payment When You Trade In Your Old Tires!

NIGHOLS-MANCHESTER TIRE, Inc. 295 BROAD ST. MI 3-5179

TURNPIKE PROVED No Down Payment When You Trade In Your Old Tires!

Major League Leaders Third Major League Sets Target Dates

New York, June 19 (AP)—Baseball's third major league has three target dates. In 1960 it hopes to line up its players first, said Bill Shea, chairman of the American Association...

Any One of Seven Traded Would Help Detroit Needs First Baseman Kaline battling for the American League batting championship?

As good as it looks and it looks plenty good! GOOD YEAR TIRE SALE!

rock-bottom priced at only \$295* Fits most pre-1957 models of Plymouth, Ford, Chevrolet, Nash, Hudson, Nash, Studebaker.

1195* 1485* 1625* Fits most pre-1957 models of Plymouth, Ford, Chevrolet, Nash, Hudson, Nash, Studebaker.

TURNPIKE PROVED No Down Payment When You Trade In Your Old Tires!

NIGHOLS-MANCHESTER TIRE, Inc. 295 BROAD ST. MI 3-5179

TURNPIKE PROVED No Down Payment When You Trade In Your Old Tires!

Major League Leaders Third Major League Sets Target Dates

New York, June 19 (AP)—Baseball's third major league has three target dates. In 1960 it hopes to line up its players first, said Bill Shea, chairman of the American Association...

Any One of Seven Traded Would Help Detroit Needs First Baseman Kaline battling for the American League batting championship?

As good as it looks and it looks plenty good! GOOD YEAR TIRE SALE!

rock-bottom priced at only \$295* Fits most pre-1957 models of Plymouth, Ford, Chevrolet, Nash, Hudson, Nash, Studebaker.

1195* 1485* 1625* Fits most pre-1957 models of Plymouth, Ford, Chevrolet, Nash, Hudson, Nash, Studebaker.

TURNPIKE PROVED No Down Payment When You Trade In Your Old Tires!

NIGHOLS-MANCHESTER TIRE, Inc. 295 BROAD ST. MI 3-5179

TURNPIKE PROVED No Down Payment When You Trade In Your Old Tires!

BEAUPRE MARINE MERCURY OUTBOARD MOTORS SALES AND SERVICE. Get Acquainted Special Armstrong Tyres. 30-MINUTE FREE INSTALLATION. 1. 14 FT. PENN YAN BOAT. 2. MARK 15-A MERCURY OUTBOARD. 3. MASTERCRAFT TRAILER FOR ABOVE OUTFIT. \$250.00 DOWN. Up to 3 Years to Pay.



BUGS BUNNY



ALLEY OOP



LONG SAM



HUZZ SAWYER



MR. ABERNATHY



THE STORY OF MARTHA WAYNE



JEFF COBB



PETE HOFFMAN



PETE HOFFMAN

PETE HOFFMAN

PETE HOFFMAN

PETE HOFFMAN

PETE HOFFMAN

PETE HOFFMAN

PETE HOFFMAN

PETE HOFFMAN

PETE HOFFMAN

PETE HOFFMAN

PETE HOFFMAN

PETE HOFFMAN

PETE HOFFMAN

PETE HOFFMAN

PETE HOFFMAN

PETE HOFFMAN

PETE HOFFMAN

PETE HOFFMAN

PETE HOFFMAN

PETE HOFFMAN

PETE HOFFMAN

PETE HOFFMAN

PETE HOFFMAN

PETE HOFFMAN

PETE HOFFMAN

PETE HOFFMAN

PETE HOFFMAN

PETE HOFFMAN

PETE HOFFMAN

PETE HOFFMAN

PETE HOFFMAN

PETE HOFFMAN

PETE HOFFMAN

PETE HOFFMAN

PETE HOFFMAN

PETE HOFFMAN

PETE HOFFMAN

PETE HOFFMAN

PETE HOFFMAN

PETE HOFFMAN

PETE HOFFMAN

PETE HOFFMAN

PETE HOFFMAN

PETE HOFFMAN

PETE HOFFMAN

PETE HOFFMAN

PETE HOFFMAN

PETE HOFFMAN

PETE HOFFMAN

PETE HOFFMAN

PETE HOFFMAN

PETE HOFFMAN

PETE HOFFMAN

PETE HOFFMAN

PETE HOFFMAN

PETE HOFFMAN

PETE HOFFMAN

PETE HOFFMAN

PETE HOFFMAN

PETE HOFFMAN

PETE HOFFMAN

PETE HOFFMAN

PETE HOFFMAN

PETE HOFFMAN

PETE HOFFMAN

PETE HOFFMAN

PETE HOFFMAN

PETE HOFFMAN

PETE HOFFMAN

PETE HOFFMAN

PETE HOFFMAN

PETE HOFFMAN

PETE HOFFMAN

PETE HOFFMAN

PETE HOFFMAN

PETE HOFFMAN

PETE HOFFMAN

PETE HOFFMAN

PETE HOFFMAN

PETE HOFFMAN

PETE HOFFMAN

PETE HOFFMAN

About Town

Highly decorated... Reservations for the luncheon of the Ladies Aid Society...

Members of Lakota Council... The Polish American Club will be open Saturday at 1 o'clock...

The executive board and members of the Ladies of St. James will meet tonight at 8 o'clock...

The Polish National Alliance Group will hold their 10th anniversary...

Visit Antler Lake this weekend... L. T. WOOD CO. ICE PLANT...

Green Photo, Braintree, Vt. MRS. FRANK BILLINGS DAY

Day-Crittenden Wedding

Miss Mary Diantha Crittenden, daughter of Mr. and Mrs. David Benton Crittenden of Gilead...

The ceremony was performed by the Rev. John W. Smith of Newbury Center, Mass. Miss Jane Caroline Crittenden was her sister's maid of honor...

The bride wore a gown of white chiffon over satin, with a deep V-neckline and a full skirt...

The bride's bouquet consisted of a variety of flowers, including roses, lilies, and gladioli...

The bride's bridesmaids wore matching blue and white dresses...

The bride's groom wore a dark suit with a white shirt and tie...

The bride's groom's best man was Mr. Arthur J. Bennett...

The bride's groom's officiating minister was the Rev. John W. Smith...

The bride's groom's officiating minister was the Rev. John W. Smith...

The bride's groom's officiating minister was the Rev. John W. Smith...

The bride's groom's officiating minister was the Rev. John W. Smith...

The bride's groom's officiating minister was the Rev. John W. Smith...

The bride's groom's officiating minister was the Rev. John W. Smith...

The bride's groom's officiating minister was the Rev. John W. Smith...

The bride's groom's officiating minister was the Rev. John W. Smith...

The bride's groom's officiating minister was the Rev. John W. Smith...

The bride's groom's officiating minister was the Rev. John W. Smith...

The bride's groom's officiating minister was the Rev. John W. Smith...

The bride's groom's officiating minister was the Rev. John W. Smith...

The bride's groom's officiating minister was the Rev. John W. Smith...

The bride's groom's officiating minister was the Rev. John W. Smith...

The bride's groom's officiating minister was the Rev. John W. Smith...

The bride's groom's officiating minister was the Rev. John W. Smith...

The bride's groom's officiating minister was the Rev. John W. Smith...

The bride's groom's officiating minister was the Rev. John W. Smith...

The bride's groom's officiating minister was the Rev. John W. Smith...

The bride's groom's officiating minister was the Rev. John W. Smith...

The bride's groom's officiating minister was the Rev. John W. Smith...

The bride's groom's officiating minister was the Rev. John W. Smith...

The bride's groom's officiating minister was the Rev. John W. Smith...

father's day gift selection! OLD SPICE AFTER SHAVE LOTION... WILLIAMS AQUA VELVA... MEN'S SKIN BRACER...

Special Sale! NYLON HOSIERY 60 gauge dark seam sheer nylons... Need a COAT for these cool summer evenings?

SET FOR Summer Fun Very tasty fashion, indeed—Our sleeveless one piece blouse and shorts with a button front skirt...

It's Hole's for Your SUBTEEN SPORTSWEAR Pedal pushers in washable fabric with contrasting belts...

AIR-COOLED FOR YOUR SHOPPING COMFORT! FREE PARKING At the Rear of Our Store

The J.W. WALKER CORP. MANCHESTER, CONN. CORNER MAIN AND OAK STREETS

Average Daily Net Press Run For the Week Ending May 22nd, 1959 12,925

Fronzizi Survives In Crisis

Buenos Aires, June 20 (AP)—Arturo Fronzizi remains president of Argentina after surmounting—at least temporarily—the greatest crisis of his 14-month administration.

Rejection of Strauss Jolts His Top Aides

Washington, June 20 (AP)—The historic Senate vote on the nomination of Lewis L. Strauss has jolted the top aides of the Atomic Energy Commission.

Africa Roughs Try to Resume Durban Strife

Durban, June 20 (AP)—A gang of young African roughs tried today to burn down a social center at Lamontville, a non-white Durban township six miles from Cape Town.

Ike Bothered By Trick Knee

Gettysburg, Pa., July 20 (AP)—President Eisenhower today was bothered by a trick knee while on another tour around the Gettysburg National Battlefield.

New Polio Vaccine Prevents Paralysis

Philadelphia, June 20 (AP)—A new vaccine for polio, developed by a team of scientists, is being tested in a large-scale trial.

Summit Parley on Tibet

Mussoorie, India, June 20 (AP)—The self-exiled Dalai Lama of Tibet said today he would welcome a meeting between Prime Minister Nehru of India and Premier Chou En-lai of Red China to discuss a solution to the Tibetan problem.

Queen Reveals Weariness on Canadian Trip

Ottawa, June 20 (AP)—Queen Elizabeth II, working queen for 12 hours a day, her four-year-old son Prince Charles, and her husband, Prince Philip, Duke of Edinburgh, revealed their weariness during a stopover in Ottawa.

No Priests or Saints New Religious Sect Gains in Philippines

Manila, June 20 (AP)—A comparatively new religious sect has gained a firm foothold in the predominantly Roman Catholic Philippines.

Debt Hiked Sixth Time Under Ike

Washington, June 20 (AP)—For the sixth time since President Eisenhower took office in 1953, the House today passed a bill raising the ceiling on the national debt.

West Reich Election May Boost Tension

Geneva, June 20 (AP)—The Big Four foreign ministers today recessed their conference until July 13 without breaking the East-West deadlock on Berlin.

Manchester Evening Herald

West-3 Sees New Red Bid for Summi Talk

Washington, June 20 (AP)—For the sixth time since President Eisenhower took office in 1953, the House today passed a bill raising the ceiling on the national debt.

West Reich Election May Boost Tension

Geneva, June 20 (AP)—The Big Four foreign ministers today recessed their conference until July 13 without breaking the East-West deadlock on Berlin.

Queen Reveals Weariness on Canadian Trip

Ottawa, June 20 (AP)—Queen Elizabeth II, working queen for 12 hours a day, her four-year-old son Prince Charles, and her husband, Prince Philip, Duke of Edinburgh, revealed their weariness during a stopover in Ottawa.

Ike Bothered By Trick Knee

Gettysburg, Pa., July 20 (AP)—President Eisenhower today was bothered by a trick knee while on another tour around the Gettysburg National Battlefield.

New Polio Vaccine Prevents Paralysis

Philadelphia, June 20 (AP)—A new vaccine for polio, developed by a team of scientists, is being tested in a large-scale trial.

Manchester Evening Herald

West-3 Sees New Red Bid for Summi Talk

Washington, June 20 (AP)—For the sixth time since President Eisenhower took office in 1953, the House today passed a bill raising the ceiling on the national debt.

West Reich Election May Boost Tension

Geneva, June 20 (AP)—The Big Four foreign ministers today recessed their conference until July 13 without breaking the East-West deadlock on Berlin.

Queen Reveals Weariness on Canadian Trip

Ottawa, June 20 (AP)—Queen Elizabeth II, working queen for 12 hours a day, her four-year-old son Prince Charles, and her husband, Prince Philip, Duke of Edinburgh, revealed their weariness during a stopover in Ottawa.

Ike Bothered By Trick Knee

Gettysburg, Pa., July 20 (AP)—President Eisenhower today was bothered by a trick knee while on another tour around the Gettysburg National Battlefield.

New Polio Vaccine Prevents Paralysis

Philadelphia, June 20 (AP)—A new vaccine for polio, developed by a team of scientists, is being tested in a large-scale trial.

The Weather Forecast by E. S. Weather Bureau Scattered showers or possibly thunderstorms this afternoon and evening. Clearing; mild tonight. Sunday mostly sunny, cool.

West Reich Election May Boost Tension

Geneva, June 20 (AP)—The Big Four foreign ministers today recessed their conference until July 13 without breaking the East-West deadlock on Berlin.

Queen Reveals Weariness on Canadian Trip

Ottawa, June 20 (AP)—Queen Elizabeth II, working queen for 12 hours a day, her four-year-old son Prince Charles, and her husband, Prince Philip, Duke of Edinburgh, revealed their weariness during a stopover in Ottawa.

Ike Bothered By Trick Knee

Gettysburg, Pa., July 20 (AP)—President Eisenhower today was bothered by a trick knee while on another tour around the Gettysburg National Battlefield.

New Polio Vaccine Prevents Paralysis

Philadelphia, June 20 (AP)—A new vaccine for polio, developed by a team of scientists, is being tested in a large-scale trial.

Debt Hiked Sixth Time Under Ike

Washington, June 20 (AP)—For the sixth time since President Eisenhower took office in 1953, the House today passed a bill raising the ceiling on the national debt.

A GREAT DAY FOR DAD! Quality and Brand Names Merchandise At House's! YOU'LL BE CALM, COOL and COLLECTED IN WONDERON SUITS... GUARANTEED TO PLEASE WITH THESE OUTSTANDING FEATURES... FREE GIFT BOXES With All Father's Day Items

West Reich Election May Boost Tension

Geneva, June 20 (AP)—The Big Four foreign ministers today recessed their conference until July 13 without breaking the East-West deadlock on Berlin.

Queen Reveals Weariness on Canadian Trip

Ottawa, June 20 (AP)—Queen Elizabeth II, working queen for 12 hours a day, her four-year-old son Prince Charles, and her husband, Prince Philip, Duke of Edinburgh, revealed their weariness during a stopover in Ottawa.

Ike Bothered By Trick Knee

Gettysburg, Pa., July 20 (AP)—President Eisenhower today was bothered by a trick knee while on another tour around the Gettysburg National Battlefield.

New Polio Vaccine Prevents Paralysis

Philadelphia, June 20 (AP)—A new vaccine for polio, developed by a team of scientists, is being tested in a large-scale trial.

Debt Hiked Sixth Time Under Ike

Washington, June 20 (AP)—For the sixth time since President Eisenhower took office in 1953, the House today passed a bill raising the ceiling on the national debt.